

Calmodulin (Phospho-Thr80/Ser82) Polyclonal Antibody

Catalog No: #12360

Orders: order@signalwayantibody.com

Package Size: #12360-1 50ul #12360-2 100ul

Support: tech@signalwayantibody.com

Description

Product Name	Calmodulin (Phospho-Thr80/Ser82) Polyclonal Antibody
Host Species	Rabbit
Clonality	Polyclonal
Purification	The antibody was affinity-purified from rabbit antiserum by affinity-chromatography using epitope-specific immunogen.
Applications	WB IHC IF ELISA
Species Reactivity	Hu Ms Rt
Specificity	Phospho-Calmodulin (T80/S82) Polyclonal Antibody detects endogenous levels of Calmodulin protein only when phosphorylated at T80/S82.
Immunogen Type	peptide
Immunogen Description	Synthesized peptide derived from human Calmodulin around the phosphorylation site of T80/S82.
Target Name	Calmodulin
Modification	Phospho
Other Names	CALM1; CALM; CAM; CAM1; CALM2; CAM2; CAMB; CALM3; CALML2; CAM3; CAMC; CAMIII; Calmodulin; CaM
Accession No.	Swiss-Prot: P62158NCBI Gene ID: 801/805/808
Uniprot	P0DP25
GeneID	801;805;808;
Target Species	human
Calculated MW	16kd
Concentration	1mg/ml
Formulation	Liquid in PBS containing 50% glycerol, 0.5% BSA and 0.02% sodium azide.
Storage	Store at -20°C/1 year

Application Details

Western blotting: 1/500 - 1/2000

Immunohistochemistry: 1/100 - 1/300

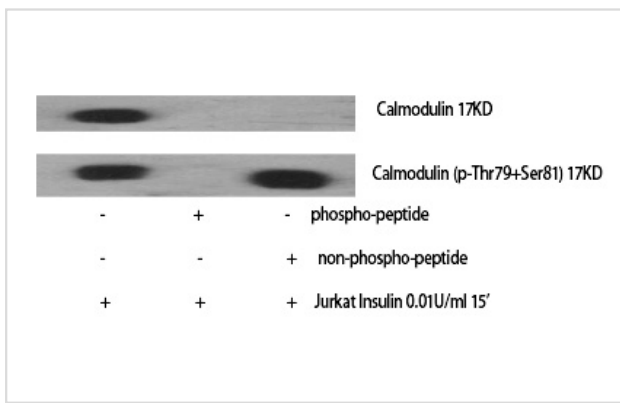
Immunofluorescence: 1/200 - 1/1000

ELISA: 1/5000

Not yet tested in other applications

Images

Western Blot analysis of Jurkat+Insulin cells using
Phospho-Calmodulin (T80/S82) Polyclonal Antibody



Note: This product is for in vitro research use only