

Net (Phospho-Ser357) Polyclonal Antibody

Catalog No: #12364

Package Size: #12364-1 50ul #12364-2 100ul

Orders: order@signalwayantibody.comSupport: tech@signalwayantibody.com

Description

Product Name	Net (Phospho-Ser357) Polyclonal Antibody
Host Species	Rabbit
Clonality	Polyclonal
Purification	The antibody was affinity-purified from rabbit antiserum by affinity-chromatography using epitope-specific immunogen.
Applications	WB IHC IF
Species Reactivity	Hu Ms Mk
Specificity	Phospho-Net (S357) Polyclonal Antibody detects endogenous levels of Net protein only when phosphorylated at S357.
Immunogen Type	peptide
Immunogen Description	Synthesized peptide derived from human Net around the phosphorylation site of S357.
Target Name	Net
Modification	Phospho
Other Names	ELK3; NET; SAP2; ETS domain-containing protein Elk-3; ETS-related protein ERP; ETS-related protein NET; Serum response factor accessory protein 2; SAP-2; SRF accessory protein 2
Accession No.	Swiss-Prot: P41970NCBI Gene ID: 2004
Uniprot	P41970
GeneID	2004;
Target Species	human
SDS-PAGE MW	38kd
Concentration	1mg/ml
Formulation	Liquid in PBS containing 50% glycerol, 0.5% BSA and 0.02% sodium azide.
Storage	Store at -20°C/1 year

Application Details

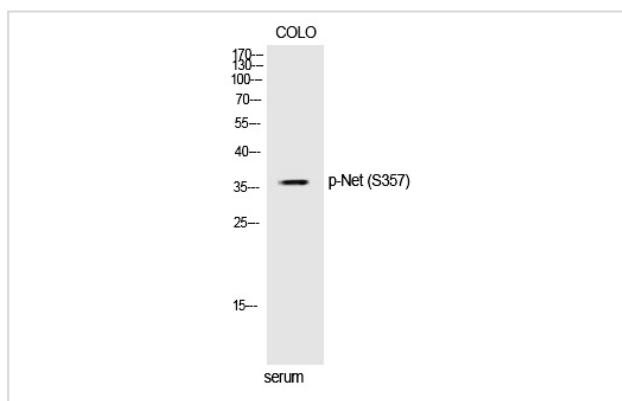
Western blotting: 1/500 - 1/2000

Immunohistochemistry: 1/100 - 1/300

Immunofluorescence: 1/200 - 1/1000

Images

Western Blot analysis of COLO cells using Phospho-Net (S357) Polyclonal Antibody



Note: This product is for in vitro research use only