

DREAM (Phospho-Ser63) Polyclonal Antibody

Catalog No: #12366

Package Size: #12366-1 50ul #12366-2 100ul

Orders: order@signalwayantibody.comSupport: tech@signalwayantibody.com

Description

| | |
|-----------------------|-------------------------------------------------------------------------------------------------------------------------------------------------------------------|
| Product Name | DREAM (Phospho-Ser63) Polyclonal Antibody |
| Host Species | Rabbit |
| Clonality | Polyclonal |
| Purification | The antibody was affinity-purified from rabbit antiserum by affinity-chromatography using epitope-specific immunogen. |
| Applications | WB IHC IF |
| Species Reactivity | Hu Ms |
| Specificity | Phospho-DREAM (S63) Polyclonal Antibody detects endogenous levels of DREAM protein only when phosphorylated at S63. |
| Immunogen Type | peptide |
| Immunogen Description | Synthesized peptide derived from human DREAM around the phosphorylation site of S63. |
| Target Name | DREAM |
| Modification | Phospho |
| Other Names | KCNIP3; CSEN; DREAM; KCHIP3; Calsenilin; A-type potassium channel modulatory protein 3; DRE-antagonist modulator; DREAM; Kv channel-interacting protein 3; KChIP3 |
| Accession No. | Swiss-Prot: Q9Y2W7NCBI Gene ID: 30818 |
| Uniprot | Q9Y2W7 |
| GeneID | 30818; |
| Target Species | human |
| SDS-PAGE MW | 29kd |
| Concentration | 1mg/ml |
| Formulation | Liquid in PBS containing 50% glycerol, 0.5% BSA and 0.02% sodium azide. |
| Storage | Store at -20°C/1 year |

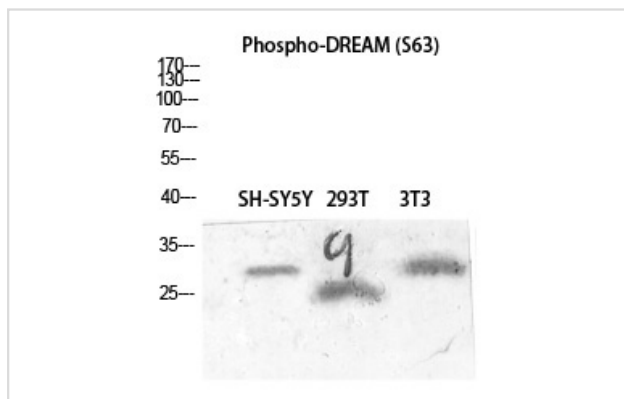
Application Details

Western blotting: 1/500 - 1/2000

Immunohistochemistry: 1/100 - 1/300

Immunofluorescence: 1/200 - 1/1000

Images



Western blot analysis of SH-SY5Y 293T 3T3 lysis using Phospho-DREAM (S63) antibody.

Note: This product is for in vitro research use only