

SIGLEC9 antibody

Catalog No: #22552



Orders: [order@signalwayantibody.com](mailto:order@signalwayantibody.com)  
Support: [tech@signalwayantibody.com](mailto:tech@signalwayantibody.com)

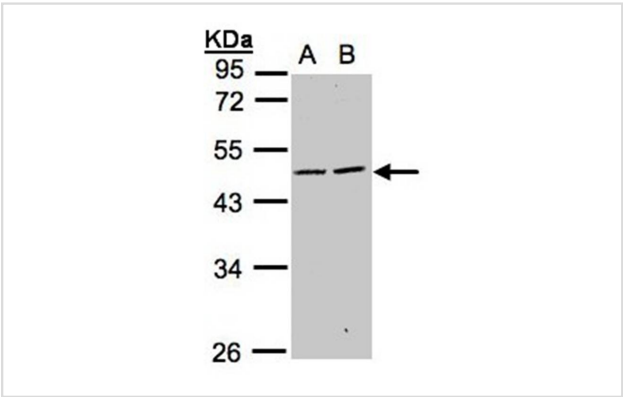
Description

Product Name	SIGLEC9 antibody
Host Species	Rabbit
Clonality	Polyclonal
Purification	Purified by antigen-affinity chromatography.
Applications	WB IHC
Species Reactivity	Hu
Immunogen Type	Recombinant protein
Immunogen Description	Recombinant protein fragment contain a sequence corresponding to a region within amino acids 1 and 243 of SIGLEC9
Target Name	SIGLEC9
Accession No.	Swiss-Prot:Q9Y336Gene ID:27180
Uniprot	Q9Y336
GeneID	27180;
Concentration	1mg/ml
Formulation	Supplied in 0.1M Tris-buffered saline with 10% Glycerol (pH7.0). 0.01% Thimerosal was added as a preservative.
Storage	Store at -20°C for long term preservation (recommended). Store at 4°C for short term use.

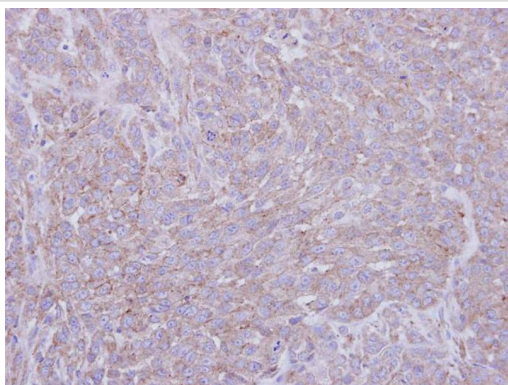
Application Details

Predicted MW: 50kd  
Western blotting: 1:500-1:3000  
Immunohistochemistry: 1:100-1:500

Images



Sample(30 ug whole cell lysate)  
A: Hep G2  
B: MOLT4  
10% SDS PAGE  
Primary antibody diluted at 1: 1000



Immunohistochemical analysis of paraffin-embedded A549 xenograft, using SIGLEC9 antibody at 1: 100 dilution.

---

Note: This product is for in vitro research use only