

## Emt (Phospho-Tyr512) Polyclonal Antibody

Catalog No: #12375

Package Size: #12375-1 50ul #12375-2 100ul

Orders: [order@signalwayantibody.com](mailto:order@signalwayantibody.com)Support: [tech@signalwayantibody.com](mailto:tech@signalwayantibody.com)

## Description

Product Name	Emt (Phospho-Tyr512) Polyclonal Antibody
Host Species	Rabbit
Clonality	Polyclonal
Purification	The antibody was affinity-purified from rabbit antiserum by affinity-chromatography using epitope-specific immunogen.
Applications	WB IHC ELISA
Species Reactivity	Hu Ms
Specificity	Phospho-Emt (Y512) Polyclonal Antibody detects endogenous levels of Emt protein only when phosphorylated at Y512.
Immunogen Type	peptide
Immunogen Description	Synthesized peptide derived from human Emt around the phosphorylation site of Y512.
Target Name	Emt
Modification	Phospho
Other Names	ITK; EMT; LYK; Tyrosine-protein kinase ITK/TSK; Interleukin-2-inducible T-cell kinase; IL-2-inducible T-cell kinase; Kinase EMT; T-cell-specific kinase; Tyrosine-protein kinase Lyk
Accession No.	Swiss-Prot: Q08881NCBI Gene ID: 3702
Uniprot	Q08881
GeneID	3702;
Target Species	human
SDS-PAGE MW	72kd
Concentration	1mg/ml
Formulation	Liquid in PBS containing 50% glycerol, 0.5% BSA and 0.02% sodium azide.
Storage	Store at -20°C/1 year

## Application Details

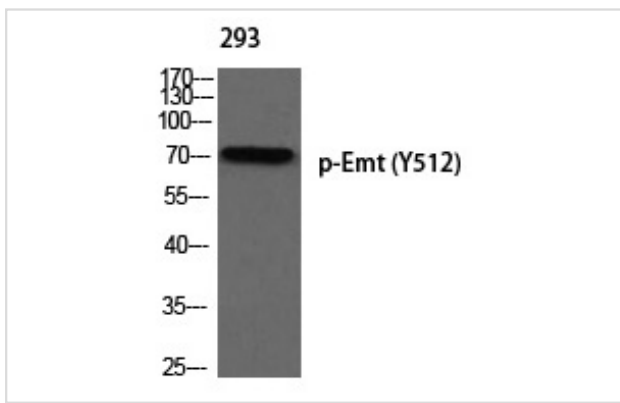
Western Blot: 1:500-2000

Immunohistochemistry: 1/100 - 1/300

ELISA: 1/5000

## Images

Western blot analysis of 293 using p-Emt (Y512) antibody.



Note: This product is for in vitro research use only