

# p70 S6 kinase $\alpha$ (Phospho-Ser427) Polyclonal Antibody

Catalog No: #12378

Orders: [order@signalwayantibody.com](mailto:order@signalwayantibody.com)Support: [tech@signalwayantibody.com](mailto:tech@signalwayantibody.com)

Package Size: #12378-1 50ul #12378-2 100ul

## Description

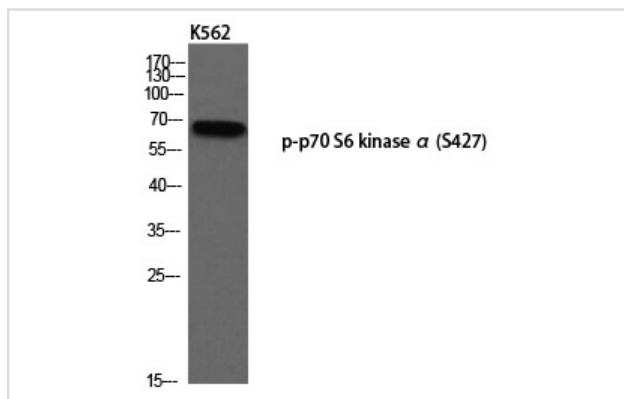
Product Name	p70 S6 kinase $\alpha$ (Phospho-Ser427) Polyclonal Antibody
Host Species	Rabbit
Clonality	Polyclonal
Purification	The antibody was affinity-purified from rabbit antiserum by affinity-chromatography using epitope-specific immunogen.
Applications	WB IHC
Species Reactivity	Hu Ms Rt
Specificity	Phospho-p70 S6 kinase $\alpha$ (S427) Polyclonal Antibody detects endogenous levels of p70 S6 kinase $\alpha$ protein only when phosphorylated at S427.
Immunogen Type	peptide
Immunogen Description	Synthesized peptide derived from human p70 S6 kinase $\alpha$ around the phosphorylation site of S427.
Target Name	p70 S6 kinase $\alpha$
Modification	Phospho
Other Names	RPS6KB1; STK14A; Ribosomal protein S6 kinase beta-1; S6K-beta-1; S6K1; 70 kDa ribosomal protein S6 kinase 1; P70S6K1; p70-S6K 1; Ribosomal protein S6 kinase I; Serine/threonine-protein kinase 14A; p70 ribosomal S6 kinase alpha; p70 S6 kinas
Accession No.	Swiss-Prot: P23443NCBI Gene ID: 6198
Uniprot	P23443
GeneID	6198;
Target Species	human
SDS-PAGE MW	70kd
Concentration	1mg/ml
Formulation	Liquid in PBS containing 50% glycerol, 0.5% BSA and 0.02% sodium azide.
Storage	Store at -20°C/1 year

## Application Details

Western Blot: 1:500-2000

Immunohistochemistry: 1/100 - 1/300

## Images



Western blot analysis of K562 using p-p70 S6 kinase  $\alpha$  (S427) antibody.

---

Note: This product is for in vitro research use only