

## Histone H2A (Phospho-Thr121) Polyclonal Antibody

Catalog No: #12381



Package Size: #12381-1 50ul #12381-2 100ul

Orders: [order@signalwayantibody.com](mailto:order@signalwayantibody.com)Support: [tech@signalwayantibody.com](mailto:tech@signalwayantibody.com)

## Description

Product Name	Histone H2A (Phospho-Thr121) Polyclonal Antibody
Host Species	Rabbit
Clonality	Polyclonal
Purification	The antibody was affinity-purified from rabbit antiserum by affinity-chromatography using epitope-specific immunogen.
Applications	WB IHC ELISA
Species Reactivity	Hu Ms Rt
Specificity	Phospho-Histone H2A (T121) Polyclonal Antibody detects endogenous levels of Histone H2A protein only when phosphorylated at T121.
Immunogen Type	peptide
Immunogen Description	Synthesized peptide derived from human Histone H2A around the phosphorylation site of T121.
Target Name	Histone H2A
Modification	Phospho
Other Names	HIST1H2AG; H2AFP; HIST1H2AI; H2AFC; HIST1H2AK; H2AFD; HIST1H2AL; H2AFI; HIST1H2AM; H2AFN; Histone H2A type 1; H2A.1; Histone H2A/p; HIST1H2AB; H2AFM; HIST1H2AE; H2AFA; Histone H2A type 1-B/E; Histone H2A.2; Histone H2A/a; Histone H2A/m; HIS
Accession No.	Swiss-Prot: P0C0S8/P04908/P20671/Q96KK5/Q6F113/Q7L7L0NCBI Gene ID: 8329/8332/8336/8969/3012/8335/3013/85235/723790/8337/92815
Uniprot	P0C0S8
GeneID	8329;8330;8332;8336;8969;
Target Species	human
Concentration	1mg/ml
Formulation	Liquid in PBS containing 50% glycerol, 0.5% BSA and 0.02% sodium azide.
Storage	Store at -20°C/1 year

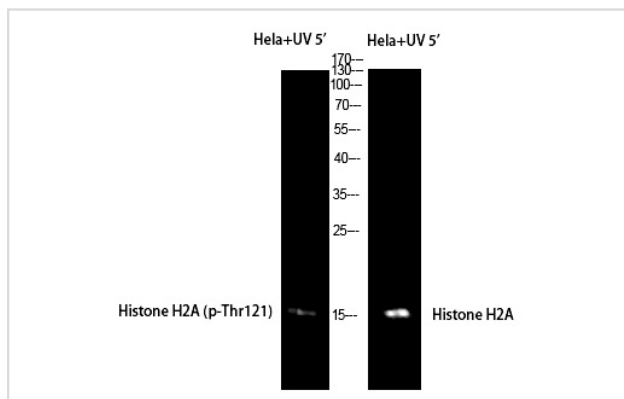
## Application Details

Western Blot: 1:500-2000

Immunohistochemistry: 1/100 - 1/300

ELISA: 1/5000

## Images



Western Blot analysis of HeLa+UV 5' cells using Phospho-Histone H2A (T121) Polyclonal Antibody

---

Note: This product is for in vitro research use only