

## IP3R-I (Phospho-Ser1764) Polyclonal Antibody

Catalog No: #12382

Package Size: #12382-1 50ul #12382-2 100ul

Orders: [order@signalwayantibody.com](mailto:order@signalwayantibody.com)Support: [tech@signalwayantibody.com](mailto:tech@signalwayantibody.com)

## Description

Product Name	IP3R-I (Phospho-Ser1764) Polyclonal Antibody
Host Species	Rabbit
Clonality	Polyclonal
Purification	The antibody was affinity-purified from rabbit antiserum by affinity-chromatography using epitope-specific immunogen.
Applications	WB IHC ELISA
Species Reactivity	Hu Ms Rt
Specificity	Phospho-IP3R-I (S1764) Polyclonal Antibody detects endogenous levels of IP3R-I protein only when phosphorylated at S1764.
Immunogen Type	peptide
Immunogen Description	Synthesized peptide derived from human IP3R-I around the phosphorylation site of S1764.
Target Name	IP3R-I
Modification	Phospho
Other Names	ITPR1; INSP3R1; Inositol 1; 4,5-trisphosphate receptor type 1; IP3 receptor isoform 1; IP3R 1; InsP3R1; Type 1 inositol 1,4,5-trisphosphate receptor; Type 1 InsP3 receptor
Accession No.	Swiss-Prot: Q14643NCBI Gene ID: 3708
Uniprot	Q14643
GeneID	3708;
Target Species	human
Calculated MW	313kd
Concentration	1mg/ml
Formulation	Liquid in PBS containing 50% glycerol, 0.5% BSA and 0.02% sodium azide.
Storage	Store at -20°C/1 year

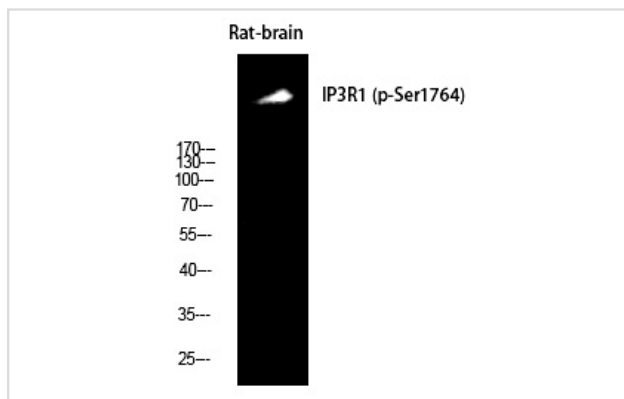
## Application Details

Western Blot: 1:500-2000

Immunohistochemistry: 1/100 - 1/300

ELISA: 1/5000

## Images



Western Blot analysis of Rat-brain cells using Phospho-IP3R-I (S1764) Polyclonal Antibody

---

Note: This product is for in vitro research use only