

## ErbB-3 (Phospho-Tyr1289) Polyclonal Antibody

Catalog No: #12386

Package Size: #12386-1 50ul #12386-2 100ul

Orders: [order@signalwayantibody.com](mailto:order@signalwayantibody.com)Support: [tech@signalwayantibody.com](mailto:tech@signalwayantibody.com)

## Description

Product Name	ErbB-3 (Phospho-Tyr1289) Polyclonal Antibody
Host Species	Rabbit
Clonality	Polyclonal
Purification	The antibody was affinity-purified from rabbit antiserum by affinity-chromatography using epitope-specific immunogen.
Applications	WB IHC IF ELISA
Species Reactivity	Hu Ms Rt
Specificity	Phospho-ErbB-3 (Y1289) Polyclonal Antibody detects endogenous levels of ErbB-3 protein only when phosphorylated at Y1289.
Immunogen Type	peptide
Immunogen Description	Synthesized peptide derived from human ErbB-3 around the phosphorylation site of Y1289.
Target Name	ErbB-3
Modification	Phospho
Other Names	ERBB3; HER3; Receptor tyrosine-protein kinase erbB-3; Proto-oncogene-like protein c-ErbB-3; Tyrosine kinase-type cell surface receptor HER3
Accession No.	Swiss-Prot: P21860NCBI Gene ID: 2065
Uniprot	P21860
GeneID	2065;
Target Species	human
SDS-PAGE MW	185kd
Concentration	1mg/ml
Formulation	Liquid in PBS containing 50% glycerol, 0.5% BSA and 0.02% sodium azide.
Storage	Store at -20°C/1 year

## Application Details

Western blotting: 1/500 - 1/2000

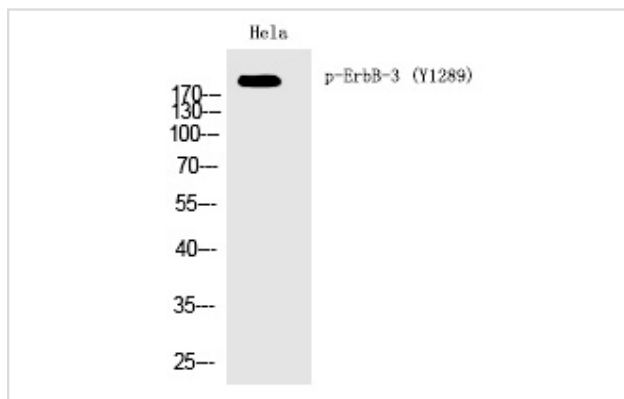
Immunohistochemistry: 1/100 - 1/300

Immunofluorescence: 1/200 - 1/1000

ELISA: 1/10000

Not yet tested in other applications

## Images



Western Blot analysis of HeLa cells using Phospho-ErbB-3 (Y1289) Polyclonal Antibody

Note: This product is for in vitro research use only