

Mcl-1 (Phospho-Ser159) Polyclonal Antibody

Catalog No: #12387

Package Size: #12387-1 50ul #12387-2 100ul

Orders: order@signalwayantibody.comSupport: tech@signalwayantibody.com

Description

Product Name	Mcl-1 (Phospho-Ser159) Polyclonal Antibody
Host Species	Rabbit
Clonality	Polyclonal
Purification	The antibody was affinity-purified from rabbit antiserum by affinity-chromatography using epitope-specific immunogen.
Applications	WB IF ELISA
Species Reactivity	Hu Ms
Specificity	Phospho-Mcl-1 (S159) Polyclonal Antibody detects endogenous levels of Mcl-1 protein only when phosphorylated at S159.
Immunogen Type	peptide
Immunogen Description	Synthesized peptide derived from human Mcl-1 around the phosphorylation site of S159.
Target Name	Mcl-1
Modification	Phospho
Other Names	MCL1; BCL2L3; Induced myeloid leukemia cell differentiation protein Mcl-1; Bcl-2-like protein 3; Bcl2-L-3; Bcl-2-related protein EAT/mcl1; mcl1/EAT
Accession No.	Swiss-Prot: Q07820NCBI Gene ID: 4170
Uniprot	Q07820
GeneID	4170;
Target Species	human
SDS-PAGE MW	39kd
Concentration	1mg/ml
Formulation	Liquid in PBS containing 50% glycerol, 0.5% BSA and 0.02% sodium azide.
Storage	Store at -20°C/1 year

Application Details

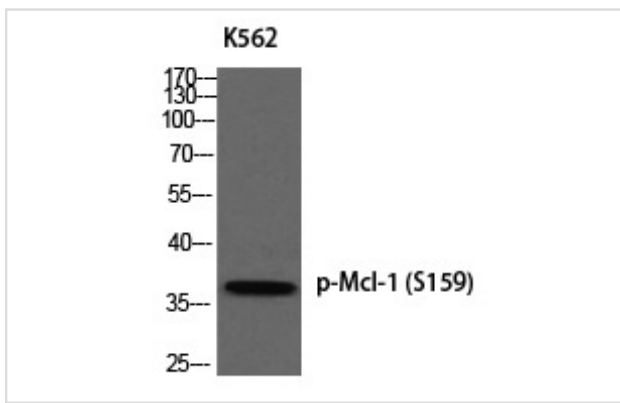
Western Blot: 1:500-2000

Immunofluorescence: 1/200 - 1/1000

ELISA: 1/10000

Images

Western blot analysis of K562 using p-Mcl-1 (S159) antibody.



Note: This product is for in vitro research use only