

## TGFβ RI (Phospho-Ser165) Polyclonal Antibody

Catalog No: #12388



Package Size: #12388-1 50ul #12388-2 100ul

Orders: [order@signalwayantibody.com](mailto:order@signalwayantibody.com)Support: [tech@signalwayantibody.com](mailto:tech@signalwayantibody.com)

## Description

Product Name	TGFβ RI (Phospho-Ser165) Polyclonal Antibody
Host Species	Rabbit
Clonality	Polyclonal
Purification	The antibody was affinity-purified from rabbit antiserum by affinity-chromatography using epitope-specific immunogen.
Applications	WB IF ELISA
Species Reactivity	Hu Ms Rt
Specificity	Phospho-TGFβ RI (S165) Polyclonal Antibody detects endogenous levels of TGFβ RI protein only when phosphorylated at S165.
Immunogen Type	peptide
Immunogen Description	Synthesized peptide derived from human TGFβ RI around the phosphorylation site of S165.
Target Name	TGFβ RI
Modification	Phospho
Other Names	TGFBR1; ALK5; SKR4; TGF-beta receptor type-1; TGFR-1; Activin A receptor type II-like protein kinase of 53kD; Activin receptor-like kinase 5; ALK-5; ALK5; Serine/threonine-protein kinase receptor R4; SKR4; TGF-beta type I receptor; Transfor
Accession No.	Swiss-Prot: P36897NCBI Gene ID: 7046
Uniprot	P36897
GeneID	7046;
Target Species	human
Concentration	1mg/ml
Formulation	Liquid in PBS containing 50% glycerol, 0.5% BSA and 0.02% sodium azide.
Storage	Store at -20°C/1 year

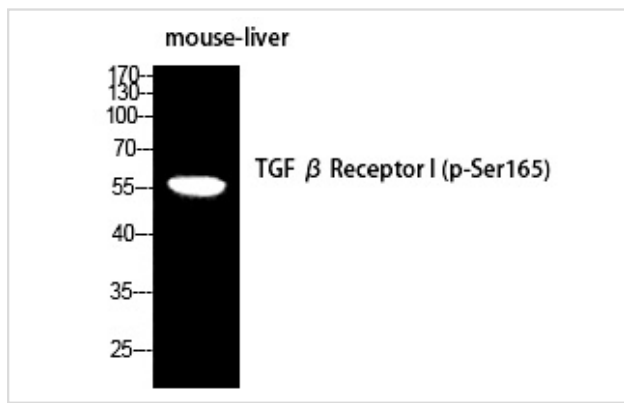
## Application Details

Western Blot: 1:500-2000

Immunofluorescence: 1/200 - 1/1000

ELISA: 1/5000

## Images



Western Blot analysis of MOUSE-LIVER cells using Phospho-TGF $\beta$  RI (S165) Polyclonal Antibody

---

Note: This product is for in vitro research use only