

## EDG-1 (Phospho-Thr236) Polyclonal Antibody

Catalog No: #12389

Package Size: #12389-1 50ul #12389-2 100ul

Orders: [order@signalwayantibody.com](mailto:order@signalwayantibody.com)Support: [tech@signalwayantibody.com](mailto:tech@signalwayantibody.com)

## Description

Product Name	EDG-1 (Phospho-Thr236) Polyclonal Antibody
Host Species	Rabbit
Clonality	Polyclonal
Purification	The antibody was affinity-purified from rabbit antiserum by affinity-chromatography using epitope-specific immunogen.
Applications	WB IF ELISA
Species Reactivity	Hu Ms Rt
Specificity	Phospho-EDG-1 (T236) Polyclonal Antibody detects endogenous levels of EDG-1 protein only when phosphorylated at T236.
Immunogen Type	peptide
Immunogen Description	Synthesized peptide derived from human EDG-1 around the phosphorylation site of T236.
Target Name	EDG-1
Modification	Phospho
Other Names	S1PR1; CHEDG1; EDG1; Sphingosine 1-phosphate receptor 1; S1P receptor 1; S1P1; Endothelial differentiation G-protein coupled receptor 1; Sphingosine 1-phosphate receptor Edg-1; S1P receptor Edg-1; CD antigen CD363
Accession No.	Swiss-Prot: P21453NCBI Gene ID: 1901
Uniprot	P21453
GeneID	1901;
Target Species	human
SDS-PAGE MW	42kd
Concentration	1mg/ml
Formulation	Liquid in PBS containing 50% glycerol, 0.5% BSA and 0.02% sodium azide.
Storage	Store at -20°C/1 year

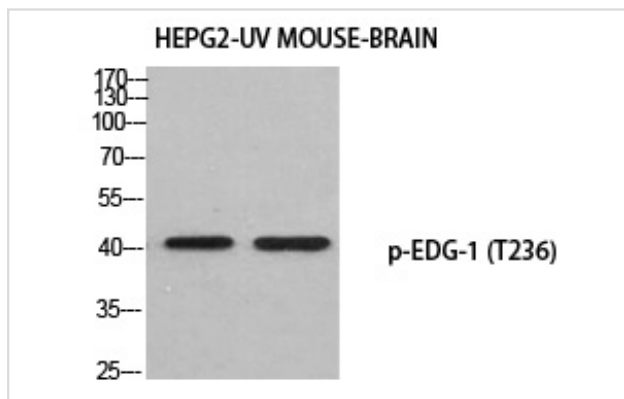
## Application Details

Western Blot: 1:500-2000

Immunofluorescence: 1/200 - 1/1000

ELISA: 1/10000

## Images



Western blot analysis of HEPG2-UV MOUSE-BRAIN using p-EDG-1 (T236) antibody.

---

Note: This product is for in vitro research use only