

## Tensin-1 (Phospho-Tyr1326) Polyclonal Antibody

Catalog No: #12390

Package Size: #12390-1 50ul #12390-2 100ul

Orders: [order@signalwayantibody.com](mailto:order@signalwayantibody.com)Support: [tech@signalwayantibody.com](mailto:tech@signalwayantibody.com)

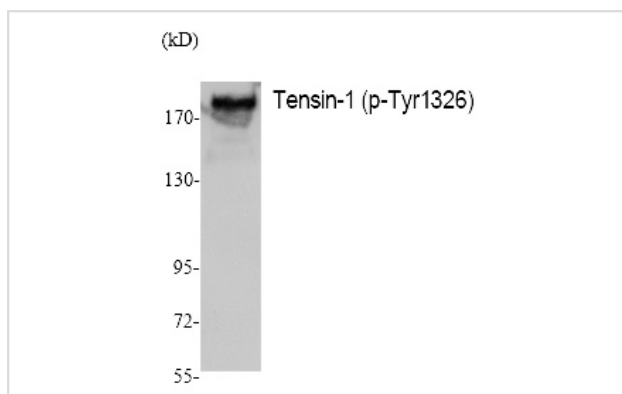
## Description

Product Name	Tensin-1 (Phospho-Tyr1326) Polyclonal Antibody
Host Species	Rabbit
Clonality	Polyclonal
Purification	The antibody was affinity-purified from rabbit antiserum by affinity-chromatography using epitope-specific immunogen.
Applications	WB
Species Reactivity	Hu Ms
Specificity	Phospho-Tensin-1 (Y1326) Polyclonal Antibody detects endogenous levels of Tensin-1 protein only when phosphorylated at Y1326.
Immunogen Type	peptide
Immunogen Description	Synthesized peptide derived from human Tensin-1 around the phosphorylation site of Y1326.
Target Name	Tensin-1
Modification	Phospho
Other Names	TNS1; TNS; Tensin-1
Accession No.	Swiss-Prot: Q9HBL0NCBI Gene ID: 7145
Uniprot	Q9HBL0
GeneID	7145;
Target Species	human
SDS-PAGE MW	185kd
Concentration	1mg/ml
Formulation	Liquid in PBS containing 50% glycerol, 0.5% BSA and 0.02% sodium azide.
Storage	Store at -20°C/1 year

## Application Details

Western blotting: 1/500 - 1/2000

## Images



Western Blot analysis of K562, cells using Phospho-Tensin-1 (Y1326) Polyclonal Antibody

---

Note: This product is for in vitro research use only