

Ob-R (Phospho-Tyr1141) Polyclonal Antibody

Catalog No: #12391

Package Size: #12391-1 50ul #12391-2 100ul

Orders: order@signalwayantibody.comSupport: tech@signalwayantibody.com

Description

Product Name	Ob-R (Phospho-Tyr1141) Polyclonal Antibody
Host Species	Rabbit
Clonality	Polyclonal
Purification	The antibody was affinity-purified from rabbit antiserum by affinity-chromatography using epitope-specific immunogen.
Applications	WB ELISA
Species Reactivity	Hu Ms
Specificity	Phospho-Ob-R (Y1141) Polyclonal Antibody detects endogenous levels of Ob-R protein only when phosphorylated at Y1141.
Immunogen Type	peptide
Immunogen Description	Synthesized peptide derived from human Ob-R around the phosphorylation site of Y1141.
Target Name	Ob-R
Modification	Phospho
Other Names	LEPR; DB; OBR; Leptin receptor; LEP-R; HuB219; OB receptor; OB-R; CD antigen CD295
Accession No.	Swiss-Prot: P48357NCBI Gene ID: 3953
Uniprot	P48357
GeneID	3953;
Target Species	human
SDS-PAGE MW	132kd
Concentration	1mg/ml
Formulation	Liquid in PBS containing 50% glycerol, 0.5% BSA and 0.02% sodium azide.
Storage	Store at -20°C/1 year

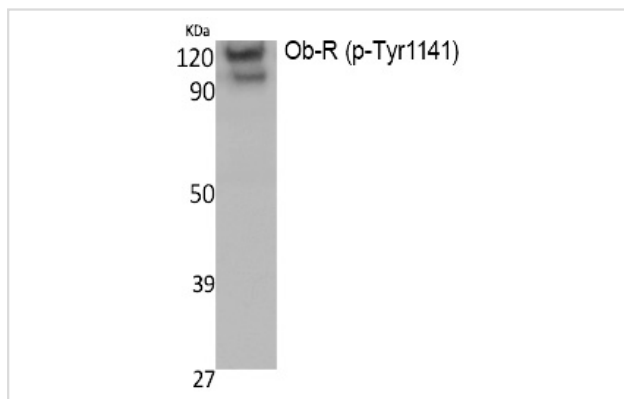
Application Details

Western blotting: 1/500 - 1/2000

ELISA: 1/5000

Not yet tested in other applications

Images



Western Blot analysis of K562, cells using Phospho-Ob-R (Y1141) Polyclonal Antibody

Note: This product is for in vitro research use only