

## Annexin I (Phospho-Tyr21) Polyclonal Antibody

Catalog No: #12392

Package Size: #12392-1 50ul #12392-2 100ul

Orders: order@signalwayantibody.com

Support: tech@signalwayantibody.com

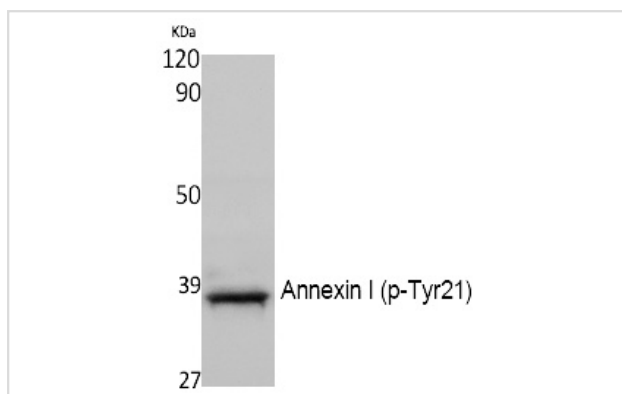
## Description

Product Name	Annexin I (Phospho-Tyr21) Polyclonal Antibody
Host Species	Rabbit
Clonality	Polyclonal
Purification	The antibody was affinity-purified from rabbit antiserum by affinity-chromatography using epitope-specific immunogen.
Applications	WB
Species Reactivity	Hu Ms
Specificity	Phospho-Annexin I (Y21) Polyclonal Antibody detects endogenous levels of Annexin I protein only when phosphorylated at Y21.
Immunogen Description	Synthesized peptide derived from human Annexin I around the phosphorylation site of Y21.
Target Name	Annexin I
Modification	Phospho
Other Names	ANXA1; ANX1; LPC1; Annexin A1; Annexin I; Annexin-1; Calpactin II; Calpactin-2; Chromobindin-9; Lipocortin I; Phospholipase A2 inhibitory protein; p35
Accession No.	Swiss-Prot: P04083NCBI Gene ID: 301
Uniprot	P04083
GeneID	301;
Target Species	human
Calculated MW	38kd
Concentration	1mg/ml
Formulation	Liquid in PBS containing 50% glycerol, 0.5% BSA and 0.02% sodium azide.
Storage	Store at -20°C/1 year

## Application Details

Western blotting: 1/500 - 1/2000

## Images



Western Blot analysis of NIH-3T3, cells using Phospho-Annexin I (Y21) Polyclonal Antibody

---

Note: This product is for in vitro research use only