

Histone H3 (Di-Methyl-Lys5) Polyclonal Antibody

Catalog No: #HW103

Package Size: #HW103-1 50ul #HW103-2 100ul

Orders: order@signalwayantibody.comSupport: tech@signalwayantibody.com

Description

Product Name	Histone H3 (Di-Methyl-Lys5) Polyclonal Antibody
Host Species	Rabbit
Clonality	Polyclonal
Purification	The antibody was affinity-purified from rabbit antiserum by affinity-chromatography using epitope-specific immunogen.
Applications	WB ELISA
Species Reactivity	Hu Ms Rt
Specificity	Di-Methyl-Histone H3 (K5) Polyclonal Antibody detects endogenous levels of Histone H3 protein only when di-methylated at K5.
Immunogen Type	peptide
Immunogen Description	Synthesized peptide derived from human Histone H3 around the di-methylation site of K5.
Target Name	Histone H3
Modification	Methyl
Other Names	HIST1H3A; H3FA; HIST1H3B; H3FL; HIST1H3C; H3FC; HIST1H3D; H3FB; HIST1H3E; H3FD; HIST1H3F; H3FI; HIST1H3G; H3FH; HIST1H3H; H3FK; HIST1H3I; H3FF; HIST1H3J; H3FJ; Histone H3.1;
Accession No.	Swiss-Prot: P68431/Q71DI3/P84243/Q6NXT2NCBI Gene ID: 8350/8351/8352/8353/8354/8355/8356/8357/8358/8968/126961/333932/653604/3020/3021/440093
Uniprot	P68431
GeneID	8350;8351;8352;8353;8354;8355;8356;8357;8358;8968;
Target Species	human
SDS-PAGE MW	17kd
Concentration	1mg/ml
Formulation	Liquid in PBS containing 50% glycerol, 0.5% BSA and 0.02% sodium azide.
Storage	Store at -20°C/1 year

Application Details

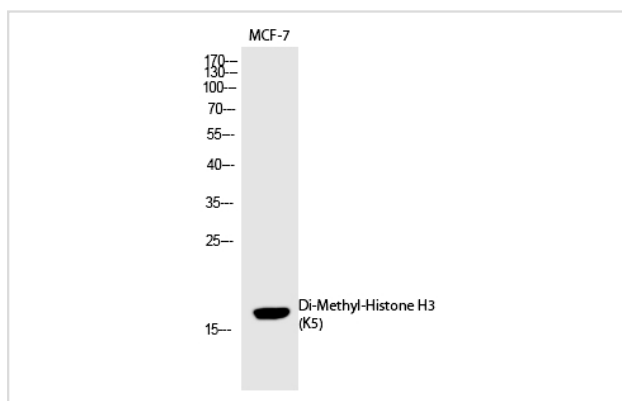
Western blotting: 1/500 - 1/2000

ELISA: 1/20000

Not yet tested in other applications

Images

Western Blot analysis of MCF-7 cells using Di-Methyl-Histone H3 (K5) Polyclonal Antibody



Note: This product is for in vitro research use only