

NFκB-p65 (Mono-Methyl-Lys314/Lys315) Polyclonal Antibody

Catalog No: #HW105

Orders: order@signalwayantibody.com

Package Size: #HW105-1 50ul #HW105-2 100ul

Support: tech@signalwayantibody.com

Description

Product Name	NFκB-p65 (Mono-Methyl-Lys314/Lys315) Polyclonal Antibody
Host Species	Rabbit
Clonality	Polyclonal
Purification	The antibody was affinity-purified from rabbit antiserum by affinity-chromatography using epitope-specific immunogen.
Applications	WB ELISA
Species Reactivity	Hu Ms Rt
Specificity	Mono-Methyl-NFκB-p65 (K314/K315) Polyclonal Antibody detects endogenous levels of p65 protein only when mono-methylated at K314/K315.
Immunogen Type	peptide
Immunogen Description	Synthesized peptide derived from human p65 around the mono-methylation site of K314/K315.
Target Name	NFκB-p65
Modification	Methyl
Other Names	RELA; NFKB3; Transcription factor p65; Nuclear factor NF-kappa-B p65 subunit;
Accession No.	Swiss-Prot: Q04206NCBI Gene ID: 5970
Uniprot	Q04206
GeneID	5970;
Target Species	human
SDS-PAGE MW	60kd
Concentration	1mg/ml
Formulation	Liquid in PBS containing 50% glycerol, 0.5% BSA and 0.02% sodium azide.
Storage	Store at -20°C/1 year

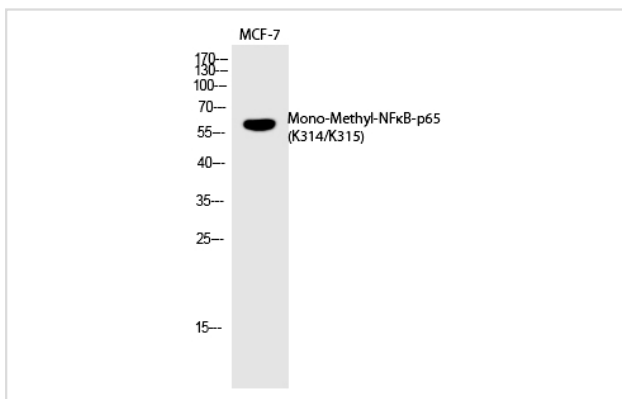
Application Details

Western blotting: 1/500 - 1/2000

ELISA: 1/20000

Not yet tested in other applications

Images



Western Blot analysis of MCF-7 cells using Mono-Methyl-NFκB-p65 (K314/K315) Polyclonal Antibody

Note: This product is for in vitro research use only