

## p53 (Di-Methyl-Lys370) Polyclonal Antibody

Catalog No: #HW106

Package Size: #HW106-1 50ul #HW106-2 100ul

Orders: [order@signalwayantibody.com](mailto:order@signalwayantibody.com)Support: [tech@signalwayantibody.com](mailto:tech@signalwayantibody.com)

## Description

Product Name	p53 (Di-Methyl-Lys370) Polyclonal Antibody
Host Species	Rabbit
Clonality	Polyclonal
Purification	The antibody was affinity-purified from rabbit antiserum by affinity-chromatography using epitope-specific immunogen.
Applications	WB ELISA
Species Reactivity	Hu
Specificity	Di-Methyl-p53 (K370) Polyclonal Antibody detects endogenous levels of p53 protein only when di-methylated at K370.
Immunogen Type	peptide
Immunogen Description	Synthesized peptide derived from human p53 around the di-methylation site of K370.
Target Name	p53
Modification	Methyl
Other Names	TP53; P53; Cellular tumor antigen p53; Antigen NY-CO-13; Phosphoprotein p53; Tumor suppressor p53
Accession No.	Swiss-Prot: P04637NCBI Gene ID: 7157
Uniprot	P04637
GeneID	7157;
Target Species	human
SDS-PAGE MW	53kd
Concentration	1mg/ml
Formulation	Liquid in PBS containing 50% glycerol, 0.5% BSA and 0.02% sodium azide.
Storage	Store at -20°C/1 year

## Application Details

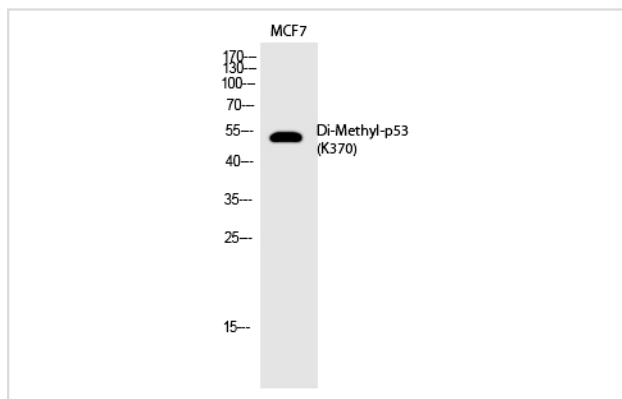
Western blotting: 1/500 - 1/2000

ELISA: 1/20000

Not yet tested in other applications

## Images

Western Blot analysis of MCF7 cells using Di-Methyl-p53 (K370) Polyclonal Antibody



---

Note: This product is for in vitro research use only