

Histone H3 (Di-Methyl-Lys10) Polyclonal Antibody

Catalog No: #HW107



Package Size: #HW107-1 50ul #HW107-2 100ul

Orders: order@signalwayantibody.comSupport: tech@signalwayantibody.com

Description

| | |
|-----------------------|---|
| Product Name | Histone H3 (Di-Methyl-Lys10) Polyclonal Antibody |
| Host Species | Rabbit |
| Clonality | Polyclonal |
| Purification | The antibody was affinity-purified from rabbit antiserum by affinity-chromatography using epitope-specific immunogen. |
| Applications | WB ELISA |
| Species Reactivity | Hu Ms Rt |
| Specificity | Di-Methyl-Histone H3 (K10) Polyclonal Antibody detects endogenous levels of Histone H3 protein only when di-methylated at K10. |
| Immunogen Type | peptide |
| Immunogen Description | Synthesized peptide derived from the N-terminal region of human Histone H3 around the di-methylation site of K10. |
| Target Name | Histone H3 |
| Modification | Methyl |
| Other Names | HIST1H3A; H3FA; HIST1H3B; H3FL; HIST1H3C; H3FC; HIST1H3D; H3FB; HIST1H3E; H3FD; HIST1H3F; H3FI; HIST1H3G; H3FH; HIST1H3H; H3FK; HIST1H3I; H3FF; HIST1H3J; H3FJ; Histone H3.1; Histone H3/a; Histone H3/b; Histone H3/c; Histone H3/d; Histone H3/f; Histone H3/ |
| Accession No. | Swiss-Prot: P68431/Q71D13/P84243/Q6NXT2/NCBI Gene ID: 8350/8351/8352/8353/8354/8355/8356/8357/8358/8968/126961/333932/653604/3020/3021/440093 |
| Uniprot | P68431 |
| GeneID | 8350;8351;8352;8353;8354;8355;8356;8357;8358;8968; |
| Target Species | human |
| SDS-PAGE MW | 17kd |
| Concentration | 1mg/ml |
| Formulation | Liquid in PBS containing 50% glycerol, 0.5% BSA and 0.02% sodium azide. |
| Storage | Store at -20°C/1 year |

Application Details

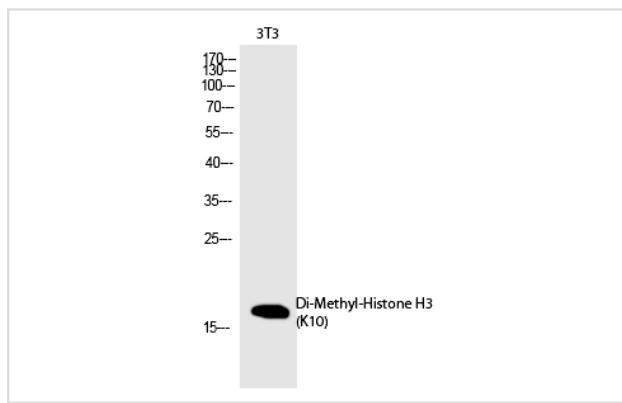
Western blotting: 1/500 - 1/2000

ELISA: 1/10000

Not yet tested in other applications

Images

Western Blot analysis of 3T3 cells using Di-Methyl-Histone H3 (K10) Polyclonal Antibody



Note: This product is for in vitro research use only