

Histone H4 (Acetyl-Lys8) Polyclonal Antibody

Catalog No: #HW108

Package Size: #HW108-1 50ul #HW108-2 100ul

Orders: order@signalwayantibody.comSupport: tech@signalwayantibody.com

Description

| | |
|-----------------------|--|
| Product Name | Histone H4 (Acetyl-Lys8) Polyclonal Antibody |
| Host Species | Rabbit |
| Clonality | Polyclonal |
| Purification | The antibody was affinity-purified from rabbit antiserum by affinity-chromatography using epitope-specific immunogen. |
| Applications | WB IHC IF ELISA |
| Species Reactivity | Hu Ms Rt Mk |
| Specificity | Acetyl-Histone H4 (K8) Polyclonal Antibody detects endogenous levels of Histone H4 protein only when acetylated at K8. |
| Immunogen Type | peptide |
| Immunogen Description | Synthesized peptide derived from human Histone H4 around the acetylation site of K8. |
| Target Name | Histone H4 |
| Modification | Acetyl |
| Other Names | HIST1H4A; H4/A; H4FA; HIST1H4B; H4/I; H4FI; HIST1H4C; H4/G; H4FG; HIST1H4D; H4/B; H4FB; HIST1H4E; H4/J; H4FJ; HIST1H4F; H4/C; H4FC; HIST1H4H; H4/H; H4FH; HIST1H4I; H4/M; H4FM; HIST1H4J; H4/E; H4FE; HIST1H4K; H4/D; H4FD; HIST1H4L; H4/K; H4FK |
| Accession No. | Swiss-Prot: P62805NCBI Gene ID: 121504/554313/8294/8359/8360/8361/8362/8363/8364/8365/8366/8367/8368/8370 |
| Uniprot | P62805 |
| GeneID | 121504;554313;8294;8359;8360;8361;8362;8363;8364;8365;8366;8367;8368;8370; |
| Target Species | human |
| SDS-PAGE MW | 11kd |
| Concentration | 1mg/ml |
| Formulation | Liquid in PBS containing 50% glycerol, 0.5% BSA and 0.02% sodium azide. |
| Storage | Store at -20°C/1 year |

Application Details

Western blotting: 1/500 - 1/2000

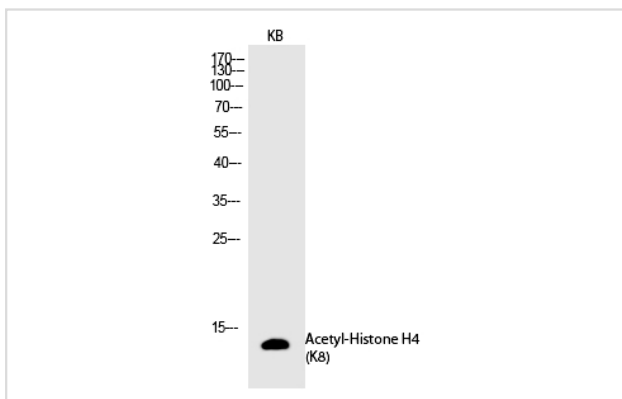
Immunohistochemistry: 1/100 - 1/300

Immunofluorescence: 1/200 - 1/1000

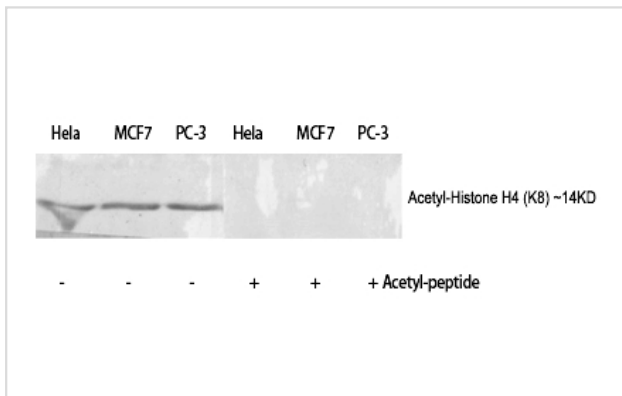
ELISA: 1/5000

Not yet tested in other applications

Images



Western Blot analysis of KB cells using Acetyl-Histone H4 (K8) Polyclonal Antibody



Western Blot analysis of HELA MCF7 PC3 cells using Acetyl-Histone H4 (K8) Polyclonal Antibody

Note: This product is for in vitro research use only