

Ref-1 (Acetyl-Lys7) Polyclonal Antibody

Catalog No: #HW113

Package Size: #HW113-1 50ul #HW113-2 100ul

Orders: order@signalwayantibody.comSupport: tech@signalwayantibody.com

Description

Product Name	Ref-1 (Acetyl-Lys7) Polyclonal Antibody
Host Species	Rabbit
Clonality	Polyclonal
Purification	The antibody was affinity-purified from rabbit antiserum by affinity-chromatography using epitope-specific immunogen.
Applications	WB ELISA
Species Reactivity	Hu
Specificity	Acetyl-Ref-1 (K7) Polyclonal Antibody detects endogenous levels of Ref-1 protein only when acetylated at K7.
Immunogen Type	peptide
Immunogen Description	Synthesized peptide derived from the human Ref-1 around the acetylation site of K7.
Target Name	Ref-1
Modification	Acetyl
Other Names	APEX1; APE; APE1; APEX; APX; HAP1; REF1; DNA-(apurinic or apyrimidinic site) lyase; APEX nuclease; APEN; Apurinic-apyrimidinic endonuclease 1; AP endonuclease 1; APE-1; REF-1; Redox factor-1
Accession No.	Swiss-Prot: P27695NCBI Gene ID: 328
Uniprot	P27695
GeneID	328;
Target Species	human
SDS-PAGE MW	35kd
Concentration	1mg/ml
Formulation	Liquid in PBS containing 50% glycerol, 0.5% BSA and 0.02% sodium azide.
Storage	Store at -20°C/1 year

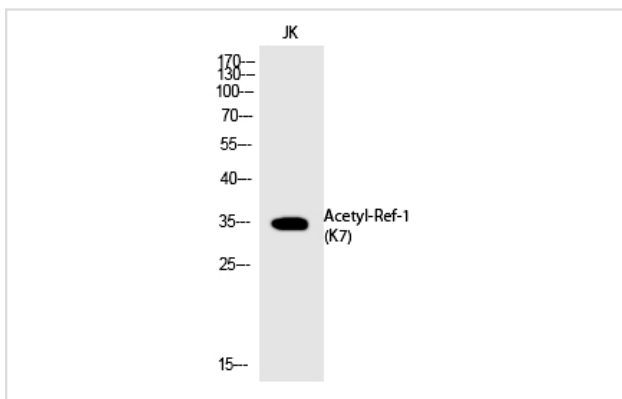
Application Details

Western blotting: 1/500 - 1/2000

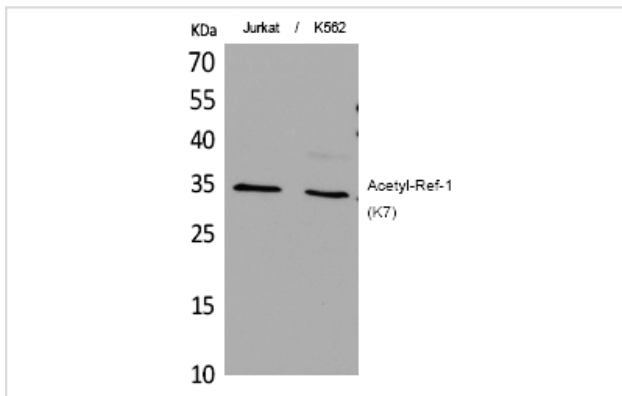
ELISA: 1/20000

Not yet tested in other applications

Images



Western Blot analysis of JK cells using Acetyl-Ref-1 (K7) Polyclonal Antibody



Western Blot analysis of JurkatK562 cells using Acetyl-Ref-1 (K7) Polyclonal Antibody

Note: This product is for in vitro research use only