

## ATF-5 (Acetyl-Lys29) Polyclonal Antibody

Catalog No: #HW114

Package Size: #HW114-1 50ul #HW114-2 100ul

Orders: [order@signalwayantibody.com](mailto:order@signalwayantibody.com)Support: [tech@signalwayantibody.com](mailto:tech@signalwayantibody.com)

## Description

Product Name	ATF-5 (Acetyl-Lys29) Polyclonal Antibody
Host Species	Rabbit
Clonality	Polyclonal
Purification	The antibody was affinity-purified from rabbit antiserum by affinity-chromatography using epitope-specific immunogen.
Applications	WB ELISA
Species Reactivity	Hu Ms Rt
Specificity	Acetyl-ATF-5 (K29) Polyclonal Antibody detects endogenous levels of ATF-5 protein only when acetylated at K29.
Immunogen Type	peptide
Immunogen Description	Synthesized peptide derived from the human ATF-5 around the acetylation site of K29.
Target Name	ATF-5
Modification	Acetyl
Other Names	ATF5; ATFX; Cyclic AMP-dependent transcription factor ATF-5; cAMP-dependent transcription factor ATF-5; Activating transcription factor 5; Transcription factor ATFx
Accession No.	Swiss-Prot: Q9Y2D1NCBI Gene ID: 22809
Uniprot	Q9Y2D1
GeneID	22809;
Target Species	human
SDS-PAGE MW	30kd
Concentration	1mg/ml
Formulation	Liquid in PBS containing 50% glycerol, 0.5% BSA and 0.02% sodium azide.
Storage	Store at -20°C/1 year

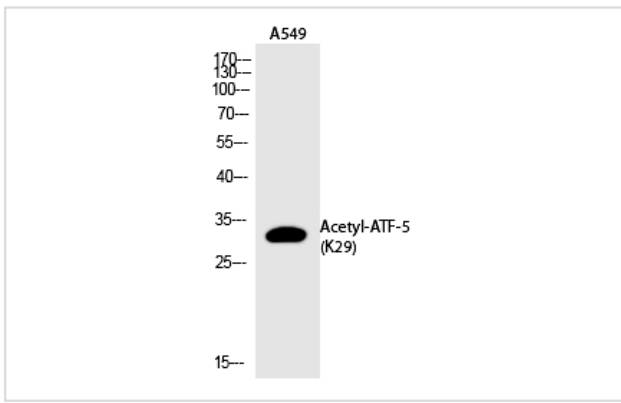
## Application Details

Western blotting: 1/500 - 1/2000

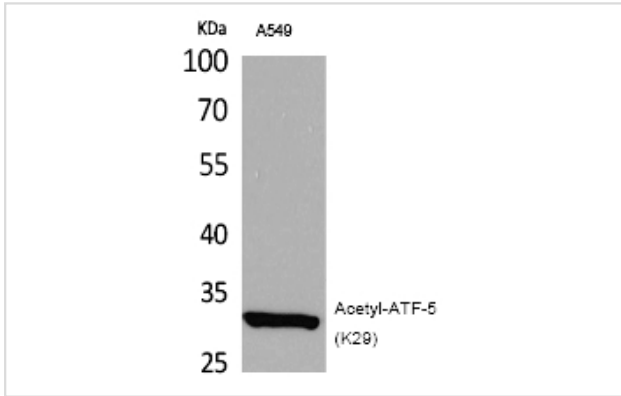
ELISA: 1/20000

Not yet tested in other applications

## Images



Western Blot analysis of A549 cells using Acetyl-ATF-5 (K29)  
Polyclonal Antibody



Western Blot analysis of A549 cells using Acetyl-ATF-5 (K29)  
Polyclonal Antibody

---

Note: This product is for in vitro research use only