

EF-1 α 1/2 (Acetyl-Lys41) Polyclonal Antibody

Catalog No: #HW117

Package Size: #HW117-1 50ul #HW117-2 100ul

Orders: order@signalwayantibody.comSupport: tech@signalwayantibody.com

Description

Product Name	EF-1 α 1/2 (Acetyl-Lys41) Polyclonal Antibody
Host Species	Rabbit
Clonality	Polyclonal
Purification	The antibody was affinity-purified from rabbit antiserum by affinity-chromatography using epitope-specific immunogen.
Applications	WB ELISA
Species Reactivity	Hu Ms Rt
Specificity	Acetyl-EF-1 α 1/2 (K41) Polyclonal Antibody detects endogenous levels of EF-1 α 1/2 protein only when acetylated at K41.
Immunogen Type	peptide
Immunogen Description	Synthesized peptide derived from the human EF-1 α 1/2 around the acetylation site of K41.
Target Name	EF-1 α 1/2
Modification	Acetyl
Other Names	EEF1A1; EEF1A; EF1A; LENG7; Elongation factor 1-alpha 1; EF-1-alpha-1; Elongation factor Tu; EF-Tu; Eukaryotic elongation factor 1 A-1; eEF1A-1; Leukocyte receptor cluster member 7; EEF1A2; EEF1AL; STN; Elongation factor 1-alpha 2; EF-1-alpha-2;
Accession No.	Swiss-Prot: P68104NCBI Gene ID: 1915
Uniprot	P68104
GeneID	1915;
Target Species	human
SDS-PAGE MW	50kd
Concentration	1mg/ml
Formulation	Liquid in PBS containing 50% glycerol, 0.5% BSA and 0.02% sodium azide.
Storage	Store at -20°C/1 year

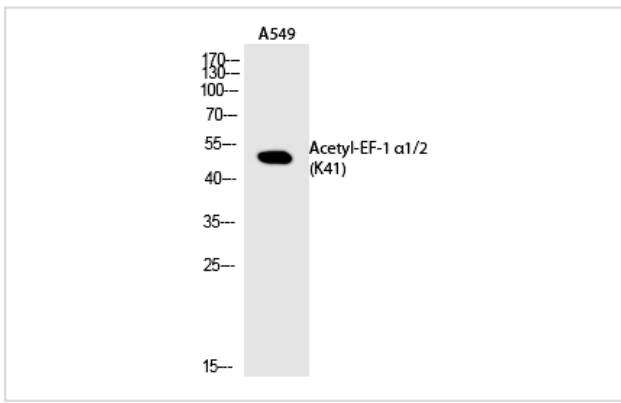
Application Details

Western blotting: 1/500 - 1/2000

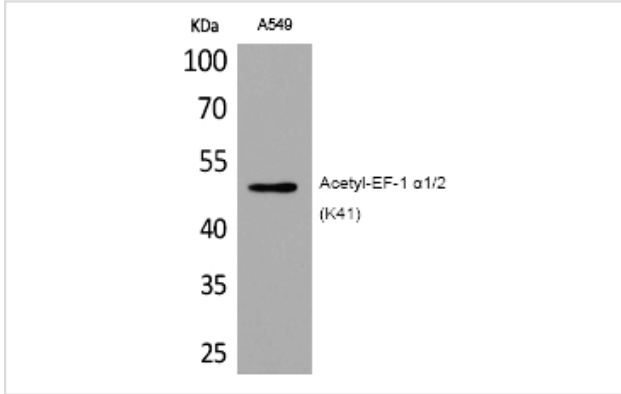
ELISA: 1/20000

Not yet tested in other applications

Images



Western Blot analysis of A549 cells using Acetyl-EF-1 α 1/2 (K41) Polyclonal Antibody



Western Blot analysis of A549 cells using Acetyl-EF-1 α 1/2 (K41) Polyclonal Antibody

Note: This product is for in vitro research use only