

Cytokeratin 8 (Acetyl-Lys483) Polyclonal Antibody

Catalog No: #HW120

Package Size: #HW120-1 50ul #HW120-2 100ul

Orders: order@signalwayantibody.comSupport: tech@signalwayantibody.com

Description

Product Name	Cytokeratin 8 (Acetyl-Lys483) Polyclonal Antibody
Host Species	Rabbit
Clonality	Polyclonal
Purification	The antibody was affinity-purified from rabbit antiserum by affinity-chromatography using epitope-specific immunogen.
Applications	WB ELISA
Species Reactivity	Hu
Specificity	Acetyl-Cytokeratin 8 (K483) Polyclonal Antibody detects endogenous levels of Cytokeratin 8 protein only when acetylated at K483.
Immunogen Type	peptide
Immunogen Description	Synthesized peptide derived from the human Cytokeratin 8 around the acetylation site of K483.
Target Name	Cytokeratin 8
Modification	Acetyl
Other Names	KRT8; CYK8; Keratin, type II cytoskeletal 8; Cytokeratin-8; CK-8; Keratin-8; K8; Type-II keratin Kb8
Accession No.	Swiss-Prot: P05787NCBI Gene ID: 3856
Uniprot	P05787
GeneID	3856;
Target Species	human
SDS-PAGE MW	53kd
Concentration	1mg/ml
Formulation	Liquid in PBS containing 50% glycerol, 0.5% BSA and 0.02% sodium azide.
Storage	Store at -20°C/1 year

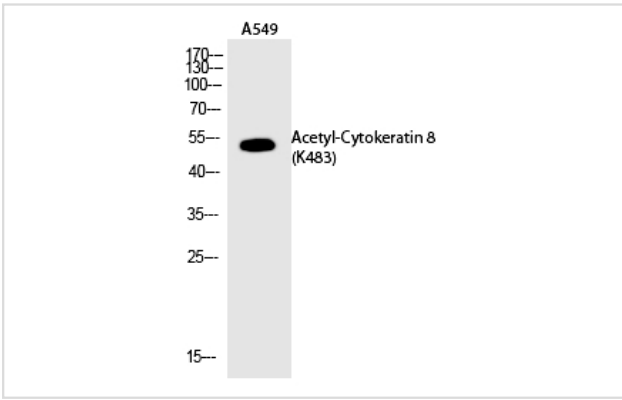
Application Details

Western blotting: 1/500 - 1/2000

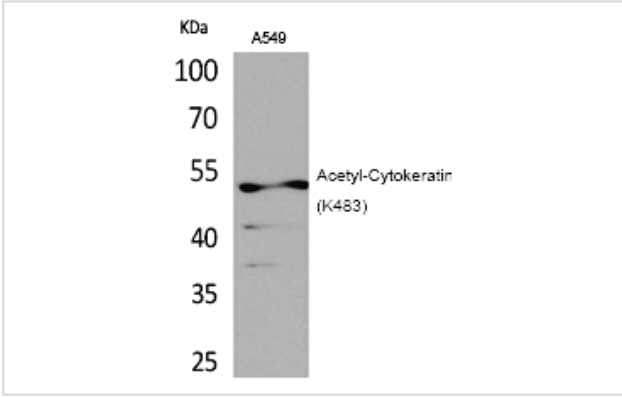
ELISA: 1/20000

Not yet tested in other applications

Images



Western Blot analysis of A549 cells using Acetyl-Cytokeratin 8 (K483) Polyclonal Antibody



Western Blot analysis of A549 cells using Acetyl-Cytokeratin 8 (K483) Polyclonal Antibody

Note: This product is for in vitro research use only