

Tubulin  $\alpha$  (Acetyl-Lys352) Polyclonal Antibody

Catalog No: #HW126

Package Size: #HW126-1 50ul #HW126-2 100ul

Orders: [order@signalwayantibody.com](mailto:order@signalwayantibody.com)Support: [tech@signalwayantibody.com](mailto:tech@signalwayantibody.com)

## Description

Product Name	Tubulin $\alpha$ (Acetyl-Lys352) Polyclonal Antibody
Host Species	Rabbit
Clonality	Polyclonal
Purification	The antibody was affinity-purified from rabbit antiserum by affinity-chromatography using epitope-specific immunogen.
Applications	WB ELISA
Species Reactivity	Hu Ms Rt
Specificity	Acetyl-Tubulin $\alpha$ (K352) Polyclonal Antibody detects endogenous levels of Tubulin $\alpha$ protein only when acetylated at K352.
Immunogen Type	peptide
Immunogen Description	Synthesized peptide derived from the human Tubulin $\alpha$ around the acetylation site of K352.
Target Name	Tubulin $\alpha$
Modification	Acetyl
Other Names	TUBA1A; TUBA3; Tubulin alpha-1A chain; Alpha-tubulin 3; Tubulin B-alpha-1; Tubulin alpha-3 chain; TUBA1B; Tubulin alpha-1B chain; Alpha-tubulin ubiquitous; Tubulin K-alpha-1; Tubulin alpha-ubiquitous chain; TUBA1C; TUBA6;
Accession No.	Swiss-Prot: Q71U36NCBI Gene ID: 7846
Uniprot	Q71U36
GeneID	7846;
Target Species	human
SDS-PAGE MW	50kd
Concentration	1mg/ml
Formulation	Liquid in PBS containing 50% glycerol, 0.5% BSA and 0.02% sodium azide.
Storage	Store at -20°C/1 year

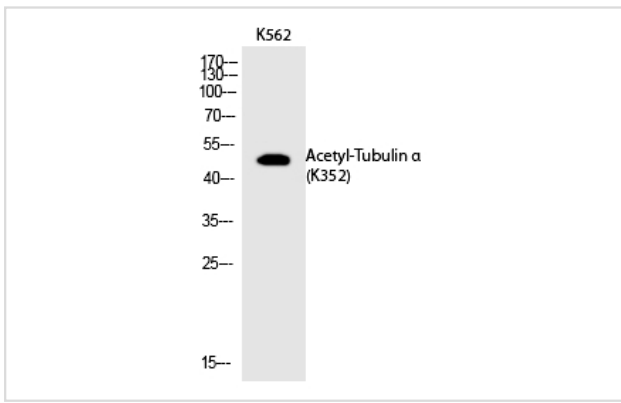
## Application Details

Western blotting: 1/500 - 1/2000

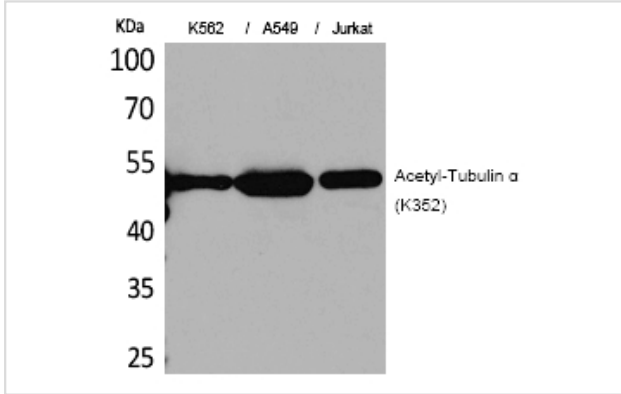
ELISA: 1/20000

Not yet tested in other applications

## Images



Western Blot analysis of K562 cells using Acetyl-Tubulin  $\alpha$  (K352) Polyclonal Antibody



Western Blot analysis of K562A549Jurkat cells using Acetyl-Tubulin  $\alpha$  (K352) Polyclonal Antibody

---

Note: This product is for in vitro research use only