

## BMAL1 (Acetyl-Lys538) Polyclonal Antibody

Catalog No: #HW127

Package Size: #HW127-1 50ul #HW127-2 100ul

Orders: [order@signalwayantibody.com](mailto:order@signalwayantibody.com)Support: [tech@signalwayantibody.com](mailto:tech@signalwayantibody.com)

## Description

Product Name	BMAL1 (Acetyl-Lys538) Polyclonal Antibody
Host Species	Rabbit
Clonality	Polyclonal
Purification	The antibody was affinity-purified from rabbit antiserum by affinity-chromatography using epitope-specific immunogen.
Applications	WB ELISA
Species Reactivity	Hu Ms Rt
Specificity	Acetyl-BMAL1 (K538) Polyclonal Antibody detects endogenous levels of BMAL1 protein only when acetylated at K538.
Immunogen Type	peptide
Immunogen Description	Synthesized peptide derived from human BMAL1 around the acetylation site of K538.
Target Name	BMAL1
Modification	Acetyl
Other Names	ARNTL; BHLHE5; BMAL1; MOP3; PASD3; Aryl hydrocarbon receptor nuclear translocator-like protein 1; Basic-helix-loop-helix-PAS protein MOP3
Accession No.	Swiss-Prot: O00327NCBI Gene ID: 406
Uniprot	O00327
GeneID	406;
Target Species	human
SDS-PAGE MW	70kd
Concentration	1mg/ml
Formulation	Liquid in PBS containing 50% glycerol, 0.5% BSA and 0.02% sodium azide.
Storage	Store at -20°C/1 year

## Application Details

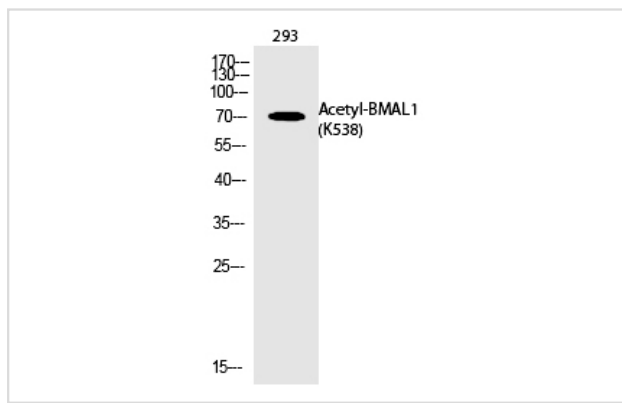
Western blotting: 1/500 - 1/2000

ELISA: 1/20000

Not yet tested in other applications

## Images

Western Blot analysis of 293 cells using Acetyl-BMAL1 (K538)  
Polyclonal Antibody



Note: This product is for in vitro research use only