

## Cytokeratin-pan (Acetyl-Lys194) Polyclonal Antibody

Catalog No: #HW128

Package Size: #HW128-1 50ul #HW128-2 100ul

Orders: [order@signalwayantibody.com](mailto:order@signalwayantibody.com)Support: [tech@signalwayantibody.com](mailto:tech@signalwayantibody.com)

## Description

Product Name	Cytokeratin-pan (Acetyl-Lys194) Polyclonal Antibody
Host Species	Rabbit
Clonality	Polyclonal
Purification	The antibody was affinity-purified from rabbit antiserum by affinity-chromatography using epitope-specific immunogen.
Applications	WB ELISA
Species Reactivity	Hu Ms Rt
Specificity	Acetyl-Cytokeratin-pan (K194) Polyclonal Antibody detects endogenous levels of Cytokeratin protein only when acetylated at K194.
Immunogen Type	peptide
Immunogen Description	Synthesized peptide derived from human Cytokeratin around the acetylation site of K194.
Target Name	Cytokeratin-pan
Modification	Acetyl
Other Names	KRT2; KRT2A; KRT2E; Keratin, type II cytoskeletal 2 epidermal; Cytokeratin-2e; CK-2e; Epithelial keratin-2e; Keratin-2 epidermis; Keratin-2e; K2e; Type-II keratin Kb2; KRT76; KRT2B; KRT2P; Keratin, type II cytoskeletal 2 oral; Cytokeratin-2P
Accession No.	Swiss-Prot: P35908/Q01546/P12035/P13647/P02538/P04259/P48668/Q3SY84/Q14CN4/Q86Y46/Q7RTS7/O95678/Q5X KE5/P08729/P05787/Q9NSB2NCBI Gene ID: 3849/51350/3850/3852/3853/3854/286887/112802/140807/319101/121391/91119/338785/3856/3890
Uniprot	P35908
GeneID	3849;
Target Species	human
SDS-PAGE MW	65kd
Concentration	1mg/ml
Formulation	Liquid in PBS containing 50% glycerol, 0.5% BSA and 0.02% sodium azide.
Storage	Store at -20°C/1 year

## Application Details

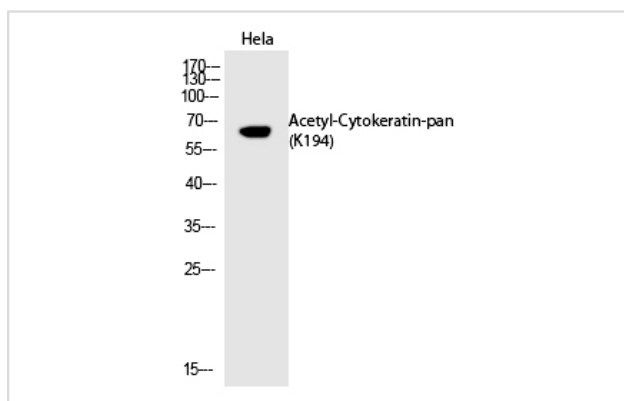
Western blotting: 1/500 - 1/2000

ELISA: 1/20000

Not yet tested in other applications

## Images

Western Blot analysis of HeLa cells using  
Acetyl-Cytokeratin-pan (K194) Polyclonal Antibody



Note: This product is for in vitro research use only