

## p53 (Acetyl-Lys320) Polyclonal Antibody

Catalog No: #HW137

Package Size: #HW137-1 50ul #HW137-2 100ul

Orders: [order@signalwayantibody.com](mailto:order@signalwayantibody.com)Support: [tech@signalwayantibody.com](mailto:tech@signalwayantibody.com)

## Description

Product Name	p53 (Acetyl-Lys320) Polyclonal Antibody
Host Species	Rabbit
Clonality	Polyclonal
Purification	The antibody was affinity-purified from rabbit antiserum by affinity-chromatography using epitope-specific immunogen.
Applications	WB ELISA
Species Reactivity	Hu
Specificity	Acetyl-p53 (K320) Polyclonal AntibodySynthesized peptide derived from the human p53 around the acetylation site of K320.
Immunogen Type	peptide
Immunogen Description	Synthesized peptide derived from the human p53 around the acetylation site of K320.
Target Name	p53
Modification	Acetyl
Other Names	TP53; P53; Cellular tumor antigen p53; Antigen NY-CO-13; Phosphoprotein p53; Tumor suppressor p53
Accession No.	Swiss-Prot: P04637NCBI Gene ID: 7157
Uniprot	P04637
GeneID	7157;
Target Species	human
SDS-PAGE MW	53kd
Concentration	1mg/ml
Formulation	Liquid in PBS containing 50% glycerol, 0.5% BSA and 0.02% sodium azide.
Storage	Store at -20°C/1 year

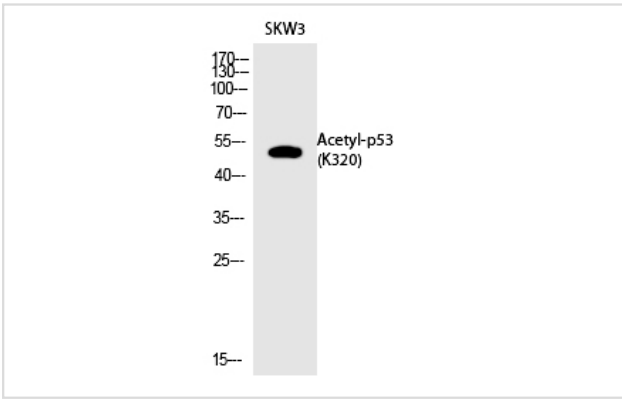
## Application Details

Western blotting: 1/500 - 1/2000

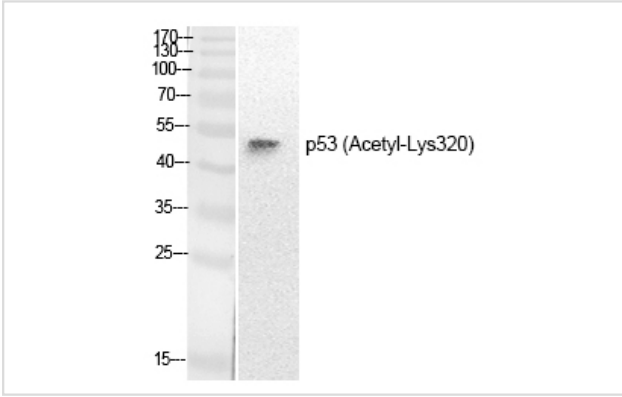
ELISA: 1/20000

Not yet tested in other applications

## Images



Western Blot analysis of SKW3 cells using Acetyl-p53 (K320)  
Polyclonal Antibody



Western Blot analysis of SKW3 cells using Acetyl-p53 (K320)  
Polyclonal Antibody

---

Note: This product is for in vitro research use only