

PTEN (Acetyl-Lys402) Polyclonal Antibody

Catalog No: #HW139

Package Size: #HW139-1 50ul #HW139-2 100ul

Orders: order@signalwayantibody.comSupport: tech@signalwayantibody.com

Description

Product Name	PTEN (Acetyl-Lys402) Polyclonal Antibody
Host Species	Rabbit
Clonality	Polyclonal
Purification	The antibody was affinity-purified from rabbit antiserum by affinity-chromatography using epitope-specific immunogen.
Applications	WB ELISA
Species Reactivity	Hu Ms Rt
Specificity	Acetyl-PTEN (K402) Polyclonal AntibodySynthesized peptide derived from the human PTEN around the acetylation site of K402.
Immunogen Type	peptide
Immunogen Description	Synthesized peptide derived from the human PTEN around the acetylation site of K402.
Target Name	PTEN
Modification	Acetyl
Other Names	PTEN; MMAC1; TEP1; Phosphatidylinositol 3,4,5-trisphosphate 3-phosphatase and dual-specificity protein phosphatase PTEN; Mutated in multiple advanced cancers 1; Phosphatase and tensin homolog
Accession No.	Swiss-Prot: P60484NCBI Gene ID: 5728
Uniprot	P60484
GeneID	5728;
Target Species	human
SDS-PAGE MW	47kd
Concentration	1mg/ml
Formulation	Liquid in PBS containing 50% glycerol, 0.5% BSA and 0.02% sodium azide.
Storage	Store at -20°C/1 year

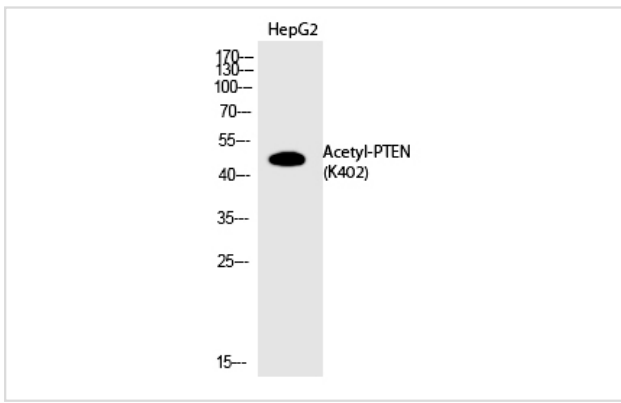
Application Details

Western blotting: 1/500 - 1/2000

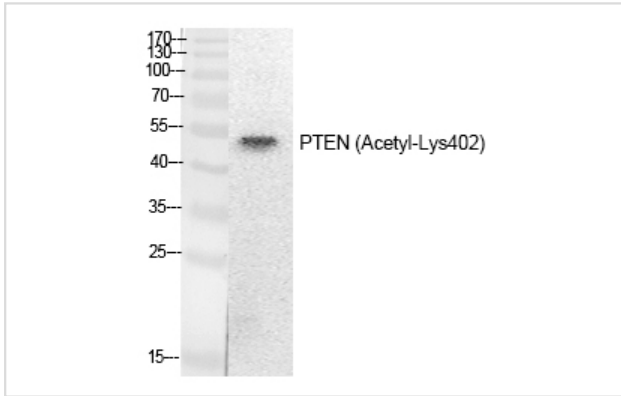
ELISA: 1/20000

Not yet tested in other applications

Images



Western Blot analysis of HepG2 cells using Acetyl-PTEN (K402) Polyclonal Antibody



Western Blot analysis of HepG2 cells using Acetyl-PTEN (K402) Polyclonal Antibody

Note: This product is for in vitro research use only