

Cortactin (Acetyl-Lys235) Polyclonal Antibody

Catalog No: #HW142

Package Size: #HW142-1 50ul #HW142-2 100ul

Orders: order@signalwayantibody.comSupport: tech@signalwayantibody.com

Description

Product Name	Cortactin (Acetyl-Lys235) Polyclonal Antibody
Host Species	Rabbit
Clonality	Polyclonal
Purification	The antibody was affinity-purified from rabbit antiserum by affinity-chromatography using epitope-specific immunogen.
Applications	WB ELISA
Species Reactivity	Hu Ms Rt
Specificity	Acetyl-Cortactin (K235) Polyclonal Antibody detects endogenous levels of Cortactin protein only when acetylation at K235.
Immunogen Description	Synthesized peptide derived from the Internal region of human Cortactin around the acetylation site of K235.
Target Name	Cortactin
Modification	Acetyl
Other Names	CTTN; EMS1; Src substrate cortactin; Amplexin; Oncogene EMS1
Accession No.	Swiss-Prot: Q14247NCBI Gene ID: 2017
Uniprot	Q14247
GeneID	2017;
Target Species	human
SDS-PAGE MW	62kd
Concentration	1mg/ml
Formulation	Liquid in PBS containing 50% glycerol, 0.5% BSA and 0.02% sodium azide.
Storage	Store at -20°C/1 year

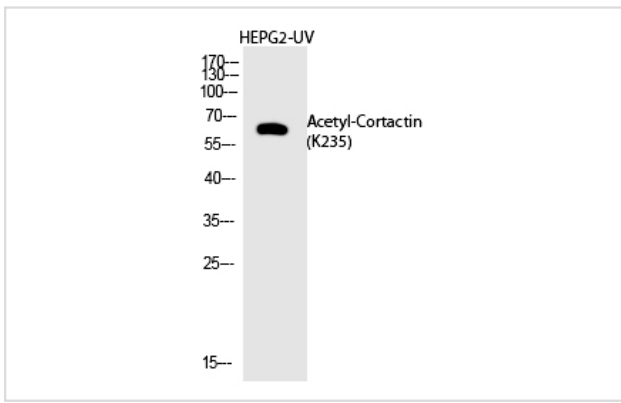
Application Details

Western blotting: 1/500 - 1/2000

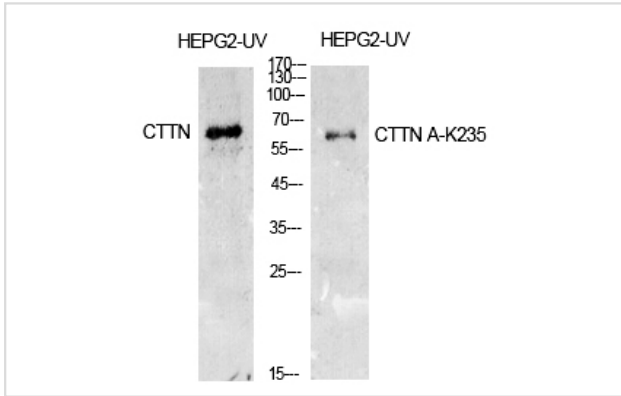
ELISA: 1/10000

Not yet tested in other applications

Images



Western Blot analysis of HEPG2-UV cells using Acetyl-Cortactin (K235) Polyclonal Antibody



Western Blot analysis of HepG2-UV cells using Acetyl-Cortactin (K235) Polyclonal Antibody

Note: This product is for in vitro research use only