

alpha-2 antiplasmin antibody

Catalog No: #22561

Orders: order@signalwayantibody.com

Support: tech@signalwayantibody.com

Description

Product Name	alpha-2 antiplasmin antibody
Host Species	Rabbit
Clonality	Polyclonal
Purification	Purified by antigen-affinity chromatography.
Applications	WB IHC IF
Species Reactivity	Hu
Immunogen Type	Recombinant protein
Immunogen Description	Recombinant protein fragment contain a sequence corresponding to a region within amino acids 188 and 423 of Human SERPINF2
Target Name	alpha-2 antiplasmin
Accession No.	Swiss-Prot:P08697Gene ID:5345
Uniprot	P08697
GeneID	5345;
Concentration	1mg/ml
Formulation	Supplied in 0.1M Tris-buffered saline with 10% Glycerol (pH7.0). 0.01% Thimerosal was added as a preservative.
Storage	Store at -20°C for long term preservation (recommended). Store at 4°C for short term use.

Application Details

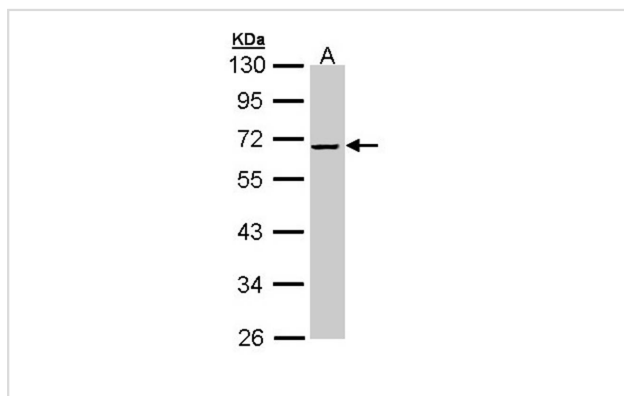
Predicted MW: 55kd

Western blotting: 1:500-1:3000

Immunohistochemistry: 1:50-1:500

Immunofluorescence: 1:100-1:200

Images

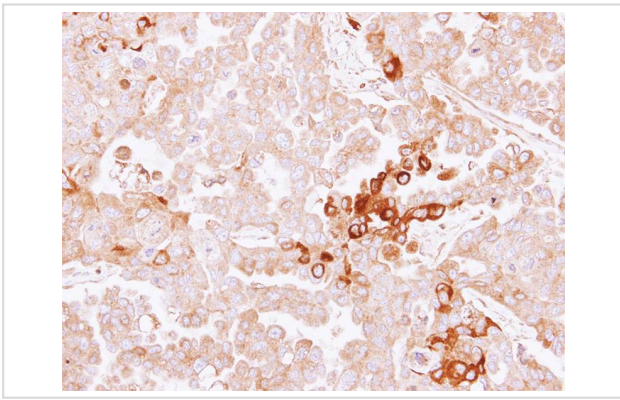


Sample (30 ug of whole cell lysate)

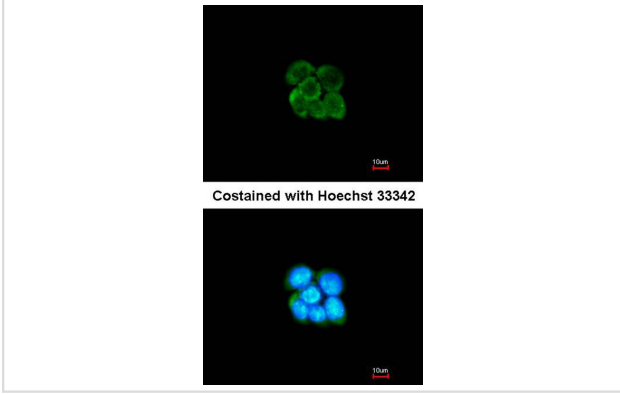
A: HeLa

10% SDS PAGE

Primary antibody diluted at 1: 1000



Immunohistochemical analysis of paraffin-embedded OVCAR3 xenograft, using alpha 2 Antiplasmin antibody at 1: 500 dilution.



Immunofluorescence analysis of methanol-fixed A431, using SERPINF2 antibody at 1: 200 dilution.

Note: This product is for in vitro research use only