

Bcl-2 Monoclonal Antibody

Catalog No: #40415

Package Size: #40415-1 50ul #40415-2 100ul

Orders: order@signalwayantibody.com

Support: tech@signalwayantibody.com

Description

Product Name	Bcl-2 Monoclonal Antibody
Host Species	Mouse
Clonality	Monoclonal
Clone No.	6B5
Purification	The antibody was affinity-purified from mouse ascites by affinity-chromatography using specific immunogen.
Applications	WB IHC IF/ICC
Species Reactivity	Hu Ms Rt
Specificity	The antibody detects endogenous Bcl-2 proteins.
Immunogen Description	Synthetic peptide of human Bcl-2
Target Name	Bcl-2
Other Names	BCL2; Apoptosis regulator Bcl-2
Accession No.	Swiss-Prot: P10415NCBI Gene ID: 596
Uniprot	P10415
GeneID	596;
SDS-PAGE MW	26kd
Concentration	0.73mg/mL
Formulation	PBS, pH 7.4, containing 0.5%BSA, 0.02% sodium azide as Preservative and 50% Glycerol.
Storage	Store at -20°C/1 year

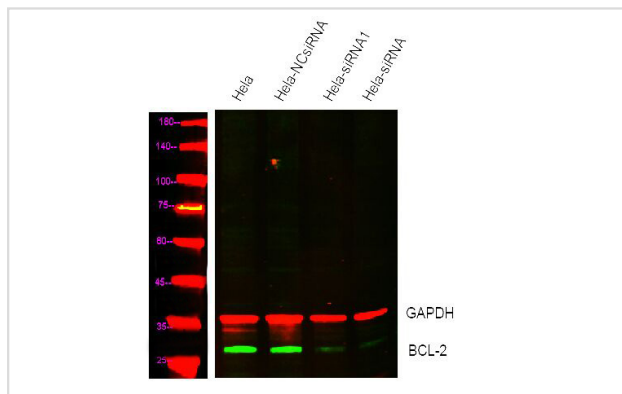
Application Details

Western blotting: 1:1000~2000

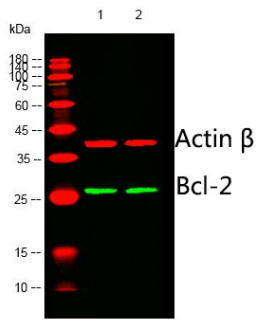
Immunohistochemistry: 1:200

IF: 1:50-200

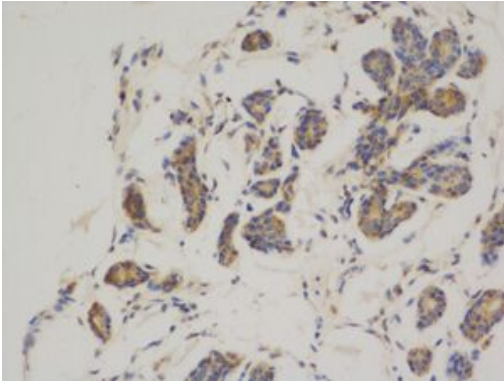
Images



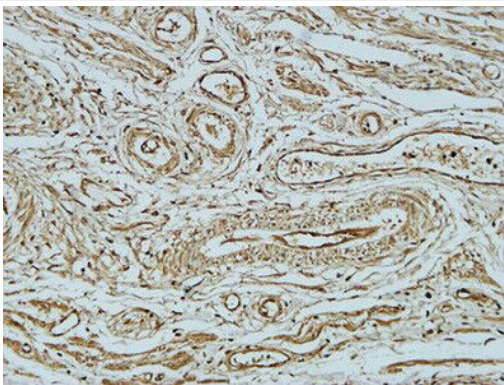
Western blot analysis of lysates from 1)Hela cell , 2)Hela cells knockdown by siRNA1



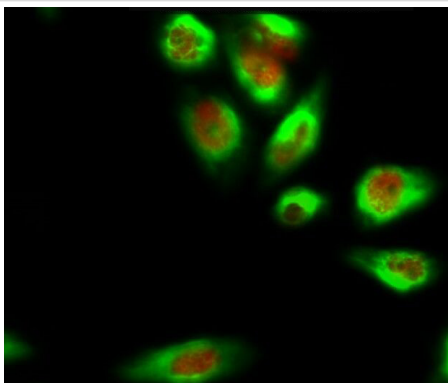
Western blot analysis of lysates from 1)Hela, 2) MCF-7 cells, (Green) primary antibody was diluted at 1:1000



Immunohistochemical analysis of paraffin-embedded Human breast cancer.



Immunohistochemical analysis of paraffin-embedded Human Fallopian tube.



Immunofluorescence analysis of HeLa cell. 1,Dnmt3b Polyclonal Antibody(red) was diluted at 1:200(4° overnight). Bcl-2 Monoclonal Antibody(6B5)(green) was diluted at 1:200(4° overnight). 2, Goat Anti Rabbit Alexa Fluor 594 was diluted at 1:1000(room temperature, 50min). Goat Anti Mouse Alexa Fluor 488 was diluted at 1:1000(room temperature, 50min).

Note: This product is for in vitro research use only