

## eIF2Bdelta antibody

Catalog No: #22566

Orders: order@signalwayantibody.com

Support: tech@signalwayantibody.com

## Description

Product Name	eIF2Bdelta antibody
Host Species	Rabbit
Clonality	Polyclonal
Purification	Purified by antigen-affinity chromatography.
Applications	WB IHC
Species Reactivity	Hu
Immunogen Type	Recombinant protein
Immunogen Description	Recombinant protein fragment contain a sequence corresponding to a region within amino acids 164 and 457 of Human EIF2B4
Target Name	eIF2Bdelta
Accession No.	NCBI Gene ID: 8890NCBI mRNA#: NM_172195NCBI Protein#: NP_751945
Uniprot	Q9UI10
GeneID	8890;
Concentration	1mg/ml
Formulation	Supplied in 0.1M Tris-buffered saline with 10% Glycerol (pH7.0). 0.01% Thimerosal was added as a preservative.
Storage	Store at -20°C for long term preservation (recommended). Store at 4°C for short term use.

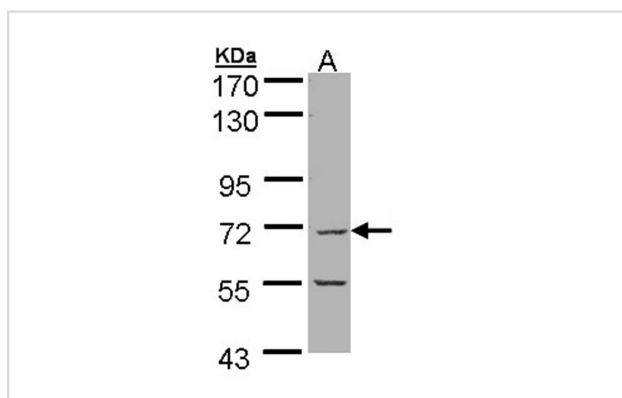
## Application Details

Predicted MW: 60kd

Western blotting: 1:500-1:3000

Immunohistochemistry: 1:50-1:500

## Images

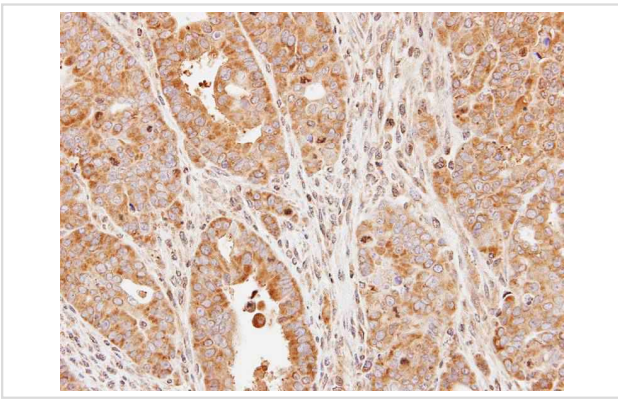


Sample (30 ug of whole cell lysate)

A: 293T

7.5% SDS PAGE

Primary antibody diluted at 1: 1000



Immunohistochemical analysis of paraffin-embedded NCI-N87 xenograft, using EIF2B delta antibody at 1: 500 dilution.

## Background

Eukaryotic initiation factor 2B (EIF2B), which is necessary for protein synthesis, is a GTP exchange factor composed of five different subunits. The protein encoded by this gene is the fourth, or delta, subunit. Defects in this gene are a cause of leukoencephalopathy with vanishing white matter (VWM) and ovarioleukodystrophy. Multiple transcript variants encoding different isoforms have been found for this gene. [provided by RefSeq]

Note: This product is for in vitro research use only