

## CYCS Monoclonal Antibody

Catalog No: #40486

Package Size: #40486-1 50ul #40486-2 100ul

Orders: [order@signalwayantibody.com](mailto:order@signalwayantibody.com)Support: [tech@signalwayantibody.com](mailto:tech@signalwayantibody.com)

## Description

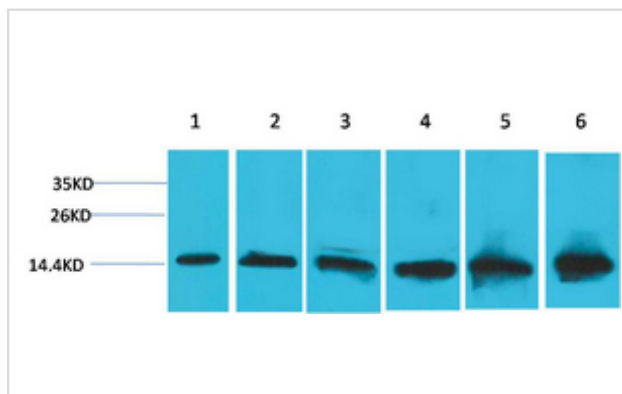
Product Name	CYCS Monoclonal Antibody
Host Species	Mouse
Clonality	Monoclonal
Purification	The antibody was affinity-purified from antiserum by affinity-chromatography
Applications	WB IHC
Species Reactivity	Hu Ms Rt
Specificity	The antibody detects endogenous CYCS protein.
Immunogen Type	Recombinant Protein
Immunogen Description	Recombinant Protein
Target Name	CYCS
Accession No.	Swiss-Prot: P99999NCBI Gene ID: 54205
Uniprot	P99999
GeneID	54205;
SDS-PAGE MW	14kd
Concentration	1mg/ml
Formulation	Liquid in PBS containing 50% glycerol, 0.5% BSA and 0.02% sodium azide.
Storage	Store at -20°C/1 year

## Application Details

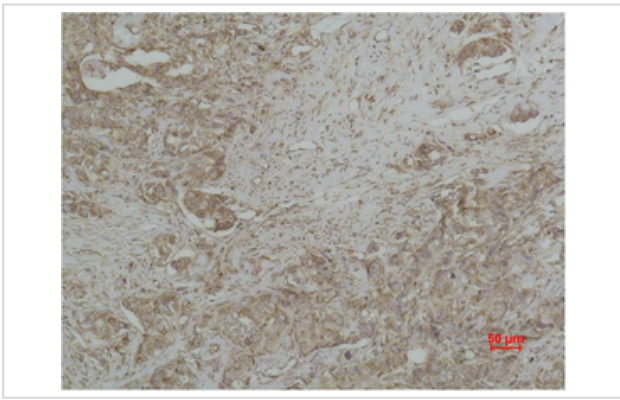
Western blotting: 1:1000-5000

Immunohistochemistry: 1:500-1000

## Images



Western blot analysis of 1) HeLa, 2) 293T, 3) 3T3, 4) Mouse Liver Tissue, 5) Rat Liver Tissue, 6) Rat Kidney Tissue using CYCS Monoclonal Antibody.



Immunohistochemical analysis of paraffin-embedded human Breast carcinoma using CYCS Monoclonal Antibody.

---

Note: This product is for in vitro research use only