

Cleaved-Caspase-6 p18 (D162) Polyclonal Antibody

Catalog No: #40501

Package Size: #40501-1 50ul #40501-2 100ul

Orders: order@signalwayantibody.comSupport: tech@signalwayantibody.com

Description

Product Name	Cleaved-Caspase-6 p18 (D162) Polyclonal Antibody
Host Species	Rabbit
Clonality	Polyclonal
Purification	The antibody was affinity-purified from rabbit antiserum by affinity-chromatography using epitope-specific immunogen.
Applications	WB IHC ELISA
Species Reactivity	Ms Rt
Specificity	Cleaved-Caspase-6 p18 (D162) Polyclonal Antibody detects endogenous levels of fragment of activated Caspase-6 p18 protein resulting from cleavage adjacent to D162.
Immunogen Type	peptide
Immunogen Description	Synthesized peptide derived from the Internal region of mouse Caspase-6 p18.
Target Name	Cleaved-Caspase-6 p18
Other Names	CASP6; MCH2; Caspase-6; CASP-6; Apoptotic protease Mch-2
SDS-PAGE MW	28+35kd
Concentration	1mg/ml
Formulation	Liquid in PBS containing 50% glycerol, 0.5% BSA and 0.02% sodium azide.
Storage	Store at -20°C/1 year

Application Details

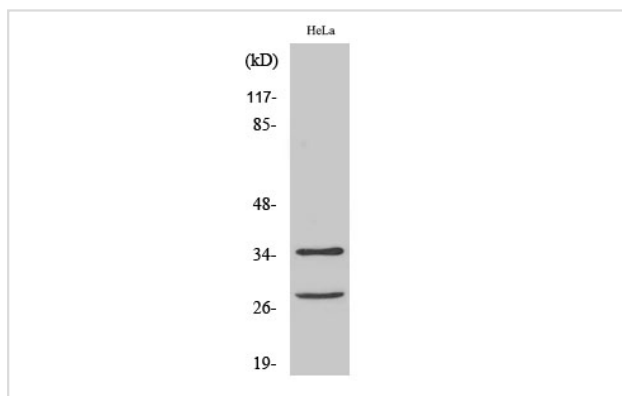
Western Blot: 1/500 - 1/2000.

Immunohistochemistry: 1/100 - 1/300.

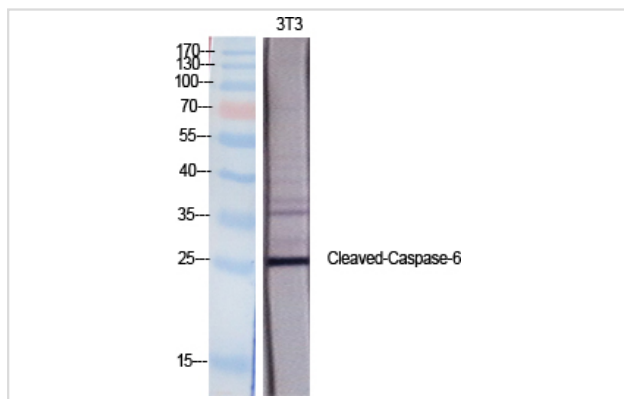
ELISA: 1/10000.

Not yet tested in other applications.

Images



Western Blot analysis of HeLa cells using Cleaved-Caspase-6 p18 (D162) Polyclonal Antibody



Western Blot analysis of NIH-3T3 cells using Cleaved-Caspase-6 p18 (D162) Polyclonal Antibody

Note: This product is for in vitro research use only