

Cleaved-Caspase-8 (D384) Polyclonal Antibody

Catalog No: #40502

Package Size: #40502-1 50ul #40502-2 100ul

Orders: order@signalwayantibody.comSupport: tech@signalwayantibody.com

Description

Product Name	Cleaved-Caspase-8 (D384) Polyclonal Antibody
Host Species	Rabbit
Clonality	Polyclonal
Purification	The antibody was affinity-purified from rabbit antiserum by affinity-chromatography using epitope-specific immunogen.
Applications	WB ELISA
Species Reactivity	Hu
Specificity	Cleaved-Caspase-8 (D384) Polyclonal Antibody detects endogenous levels of fragment of activated Caspase-8 protein resulting from cleavage adjacent to D384.
Immunogen Type	peptide
Immunogen Description	Synthesized peptide derived from the C-terminal region of human Caspase-8.
Target Name	Cleaved-Caspase-8
Other Names	CASP8; MCH5; Caspase-8; CASP-8; Apoptotic cysteine protease; Apoptotic protease Mch-5; CAP4; FADD-homologous ICE/ced-3-like protease; FADD-like ICE; FLICE; ICE-like apoptotic protease 5; MORT1-associated ced-3 homolog; MACH
Accession No.	Swiss-Prot: Q14790NCBI Gene ID: 841
Uniprot	Q14790
GeneID	841;
SDS-PAGE MW	47+55kd
Concentration	1mg/ml
Formulation	Liquid in PBS containing 50% glycerol, 0.5% BSA and 0.02% sodium azide.
Storage	Store at -20°C/1 year

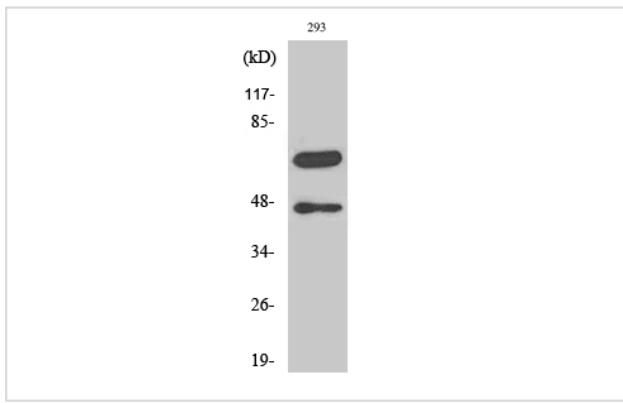
Application Details

Western Blot: 1/500 - 1/2000.

ELISA: 1/40000.

Not yet tested in other applications.

Images



Western Blot analysis of 293 cells using Cleaved-Caspase-8 (D384) Polyclonal Antibody

Note: This product is for in vitro research use only