

## Cleaved-Caspase-9 (D353) Polyclonal Antibody

Catalog No: #40503

Package Size: #40503-1 50ul #40503-2 100ul

Orders: order@signalwayantibody.com

Support: tech@signalwayantibody.com

## Description

Product Name	Cleaved-Caspase-9 (D353) Polyclonal Antibody
Host Species	Rabbit
Clonality	Polyclonal
Purification	The antibody was affinity-purified from rabbit antiserum by affinity-chromatography using epitope-specific immunogen.
Applications	WB IHC ELISA IF
Species Reactivity	Ms Rt
Specificity	Cleaved-Caspase-9 (D353) Polyclonal Antibody detects endogenous levels of fragment of activated Caspase-9 protein resulting from cleavage adjacent to D353.
Immunogen Description	Synthesized peptide derived from the C-terminal region of human Caspase-9.
Target Name	Cleaved-Caspase-9
Other Names	CASP9; MCH6; Caspase-9; CASP-9; Apoptotic protease Mch-6; Apoptotic protease-activating factor 3; APAF-3; ICE-like apoptotic protease 6; ICE-LAP6
SDS-PAGE MW	17kd
Concentration	1mg/ml
Formulation	Liquid in PBS containing 50% glycerol, 0.5% BSA and 0.02% sodium azide.
Storage	Store at -20°C/1 year

## Application Details

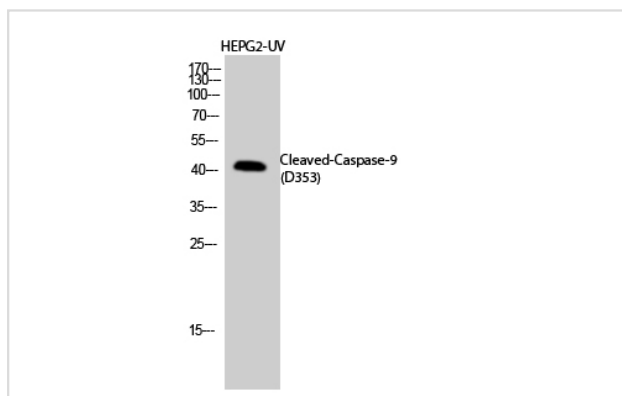
Western Blot: 1/500 - 1/2000.

Immunohistochemistry: 1/100 - 1/300.

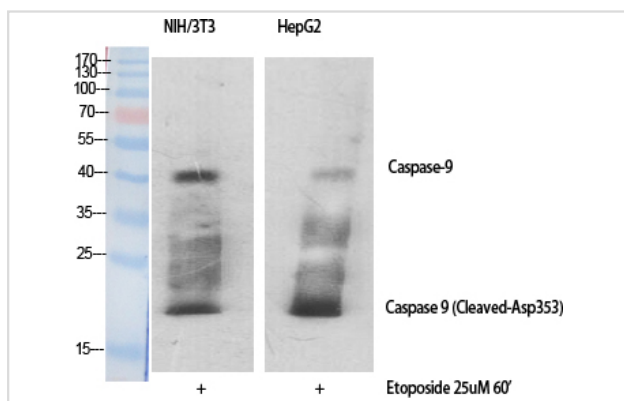
ELISA: 1/20000.

Not yet tested in other applications.

## Images



Western Blot analysis of HEPG2-UV cells using Cleaved-Caspase-9 (D353) Polyclonal Antibody



Western Blot analysis of NIH-3T3 HepG2 cells using Cleaved-Caspase-9 (D353) Polyclonal Antibody

Note: This product is for in vitro research use only