

Cleaved-Caspase-2 p18 (G170) Polyclonal Antibody

Catalog No: #40506

Package Size: #40506-1 50ul #40506-2 100ul

Orders: order@signalwayantibody.comSupport: tech@signalwayantibody.com

Description

Product Name	Cleaved-Caspase-2 p18 (G170) Polyclonal Antibody
Host Species	Rabbit
Clonality	Polyclonal
Purification	The antibody was affinity-purified from rabbit antiserum by affinity-chromatography using epitope-specific immunogen.
Applications	WB ELISA
Species Reactivity	Hu
Specificity	Cleaved-Caspase-2 p18 (G170) Polyclonal Antibody detects endogenous levels of fragment of activated Caspase-2 p18 protein resulting from cleavage adjacent to G170.
Immunogen Type	peptide
Immunogen Description	Synthesized peptide derived from the Internal region of human Caspase-2 p18.
Target Name	Cleaved-Caspase-2 p18
Other Names	CASP2; ICH1; NEDD2; Caspase-2; CASP-2; Neural precursor cell expressed developmentally down-regulated protein 2; NEDD-2; Protease ICH-1
Accession No.	Swiss-Prot: P42575NCBI Gene ID: 835
Uniprot	P42575
GeneID	835;
SDS-PAGE MW	18kd
Concentration	1mg/ml
Formulation	Liquid in PBS containing 50% glycerol, 0.5% BSA and 0.02% sodium azide.
Storage	Store at -20°C/1 year

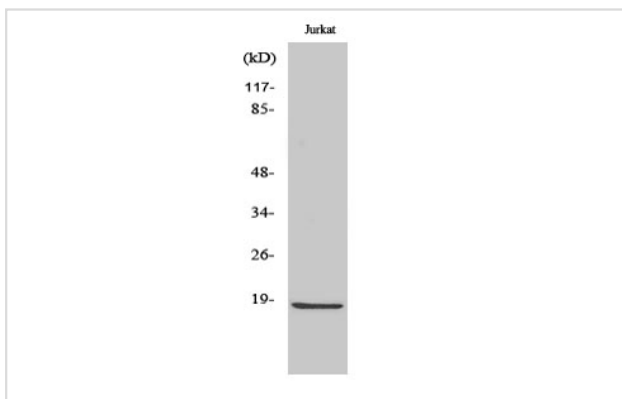
Application Details

Western Blot: 1/500 - 1/2000.

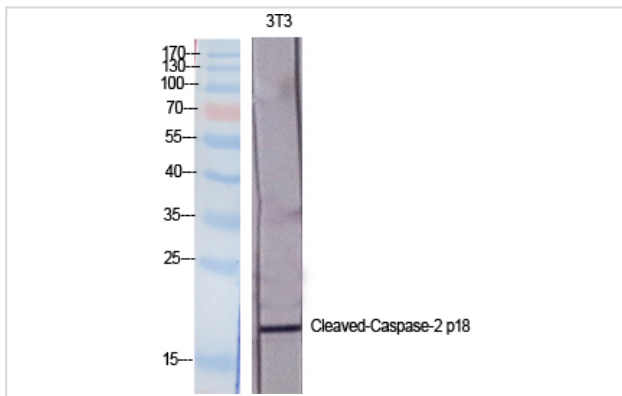
ELISA: 1/40000.

Not yet tested in other applications.

Images



Western Blot analysis of Jurkat cells using
Cleaved-Caspase-2 p18 (G170) Polyclonal Antibody



Western Blot analysis of NIH-3T3 cells using
Cleaved-Caspase-2 p18 (G170) Polyclonal Antibody

Note: This product is for in vitro research use only