

Cleaved-Caspase-4 p20 (Q81) Polyclonal Antibody

Catalog No: #40508

Package Size: #40508-1 50ul #40508-2 100ul

Orders: order@signalwayantibody.comSupport: tech@signalwayantibody.com

Description

Product Name	Cleaved-Caspase-4 p20 (Q81) Polyclonal Antibody
Host Species	Rabbit
Clonality	Polyclonal
Purification	The antibody was affinity-purified from rabbit antiserum by affinity-chromatography using epitope-specific immunogen.
Applications	WB IHC ELISA
Species Reactivity	Hu
Specificity	Cleaved-Caspase-4 p20 (Q81) Polyclonal Antibody detects endogenous levels of fragment of activated Caspase-4 p20 protein resulting from cleavage adjacent to Q81.
Immunogen Type	peptide
Immunogen Description	Synthesized peptide derived from the Internal region of human Caspase-4 p20.
Target Name	Cleaved-Caspase-4 p20
Other Names	CASP4; ICH2; Caspase-4; CASP-4; ICE(rel)-II; Protease ICH-2; Protease TX
Accession No.	Swiss-Prot: P49662NCBI Gene ID: 837
Uniprot	P49662
GeneID	837;
SDS-PAGE MW	43+22kd
Concentration	1mg/ml
Formulation	Liquid in PBS containing 50% glycerol, 0.5% BSA and 0.02% sodium azide.
Storage	Store at -20°C/1 year

Application Details

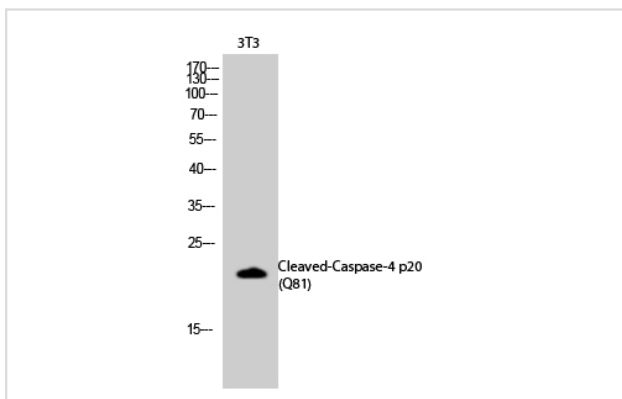
Western Blot: 1/500 - 1/2000.

Immunohistochemistry: 1/100 - 1/300.

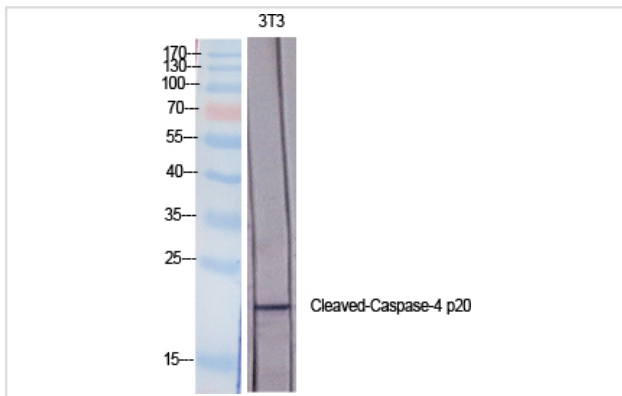
ELISA: 1/40000.

Not yet tested in other applications.

Images



Western Blot analysis of 3T3 cells using Cleaved-Caspase-4 p20 (Q81) Polyclonal Antibody



Western Blot analysis of NIH-3T3 cells using Cleaved-Caspase-4 p20 (Q81) Polyclonal Antibody

Note: This product is for in vitro research use only