

## Cleaved-Caspase-5 p10 (S331) Polyclonal Antibody

Catalog No: #40509

Package Size: #40509-1 50ul #40509-2 100ul

Orders: [order@signalwayantibody.com](mailto:order@signalwayantibody.com)Support: [tech@signalwayantibody.com](mailto:tech@signalwayantibody.com)

## Description

Product Name	Cleaved-Caspase-5 p10 (S331) Polyclonal Antibody
Host Species	Rabbit
Clonality	Polyclonal
Purification	The antibody was affinity-purified from rabbit antiserum by affinity-chromatography using epitope-specific immunogen.
Applications	WB ELISA
Species Reactivity	Hu
Specificity	Cleaved-Caspase-5 p10 (S331) Polyclonal Antibody detects endogenous levels of fragment of activated Caspase-5 p10 protein resulting from cleavage adjacent to S331.
Immunogen Type	peptide
Immunogen Description	Synthesized peptide derived from the C-terminal region of human Caspase-5 p10.
Target Name	Cleaved-Caspase-5 p10
Other Names	CASP5; ICH3; Caspase-5; CASP-5; ICE(rel)-III; Protease ICH-3; Protease TY
Accession No.	Swiss-Prot: P51878NCBI Gene ID: 838
Uniprot	P51878
GeneID	838;
SDS-PAGE MW	10kd
Concentration	1mg/ml
Formulation	Liquid in PBS containing 50% glycerol, 0.5% BSA and 0.02% sodium azide.
Storage	Store at -20°C/1 year

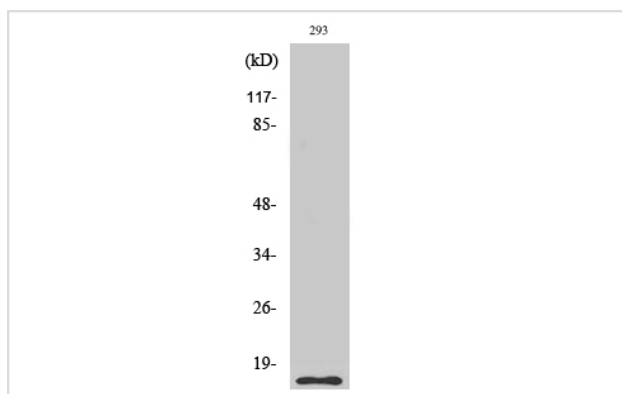
## Application Details

Western Blot: 1/500 - 1/2000.

ELISA: 1/20000.

Not yet tested in other applications.

## Images



Western Blot analysis of 293 cells using Cleaved-Caspase-5 p10 (S331) Polyclonal Antibody

---

Note: This product is for in vitro research use only