

Caspase-7 Polyclonal Antibody

Catalog No: #40511

Package Size: #40511-1 50ul #40511-2 100ul

Orders: order@signalwayantibody.com

Support: tech@signalwayantibody.com

Description

Product Name	Caspase-7 Polyclonal Antibody
Host Species	Rabbit
Clonality	Polyclonal
Purification	The antibody was affinity-purified from rabbit antiserum by affinity-chromatography using epitope-specific immunogen.
Applications	WB ELISA
Species Reactivity	Hu
Specificity	Caspase-7 Polyclonal Antibody detects endogenous levels of Caspase-7 protein.
Immunogen Type	peptide
Immunogen Description	Synthesized peptide derived from the Internal region of human Caspase-7.
Target Name	Caspase-7
Other Names	CASP7; MCH3; Caspase-7; CASP-7; Apoptotic protease Mch-3; CMH-1; ICE-like apoptotic protease 3; ICE-LAP3
Accession No.	Swiss-Prot: P55210NCBI Gene ID: 840
Uniprot	P55210
GeneID	840;
SDS-PAGE MW	34kd
Concentration	1mg/ml
Formulation	Liquid in PBS containing 50% glycerol, 0.5% BSA and 0.02% sodium azide.
Storage	Store at -20°C/1 year

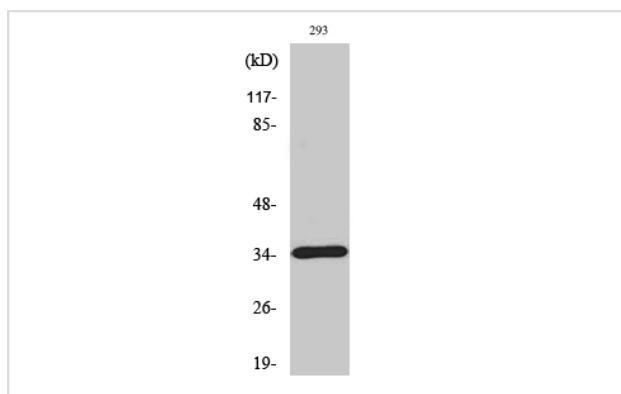
Application Details

Western Blot: 1/500 - 1/2000.

ELISA: 1/40000.

Not yet tested in other applications.

Images



Western Blot analysis of A549 cells using Caspase-7 Polyclonal Antibody

Note: This product is for in vitro research use only