

Cleaved-COL3A1 (G1221) Polyclonal Antibody

Catalog No: #40513

Package Size: #40513-1 50ul #40513-2 100ul

Orders: order@signalwayantibody.comSupport: tech@signalwayantibody.com

Description

Product Name	Cleaved-COL3A1 (G1221) Polyclonal Antibody
Host Species	Rabbit
Clonality	Polyclonal
Purification	The antibody was affinity-purified from rabbit antiserum by affinity-chromatography using epitope-specific immunogen.
Applications	WB ELISA
Species Reactivity	Hu
Specificity	Cleaved-COL3A1 (G1221) Polyclonal Antibody detects endogenous levels of fragment of activated COL3A1 protein resulting from cleavage adjacent to G1221.
Immunogen Type	peptide
Immunogen Description	Synthesized peptide derived from the C-terminal region of human COL3A1.
Target Name	Cleaved-COL3A1
Other Names	COL3A1; Collagen alpha-1(III) chain
Accession No.	Swiss-Prot: P02461NCBI Gene ID: 1281
Uniprot	P02461
GeneID	1281;
SDS-PAGE MW	95kd
Concentration	1mg/ml
Formulation	Liquid in PBS containing 50% glycerol, 0.5% BSA and 0.02% sodium azide.
Storage	Store at -20°C/1 year

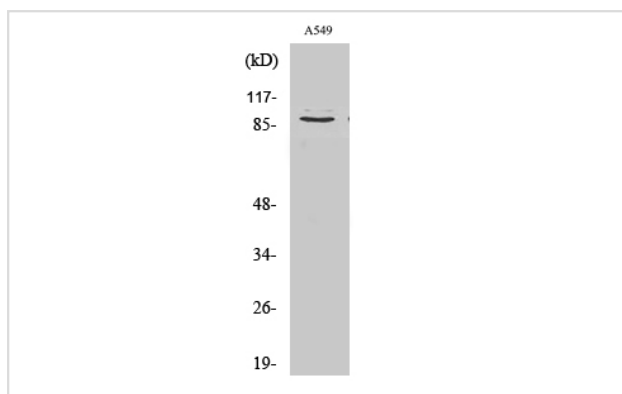
Application Details

Western Blot: 1/500 - 1/2000.

ELISA: 1/10000.

Not yet tested in other applications.

Images



Western Blot analysis of A549 cells using Cleaved-COL3A1 (G1221) Polyclonal Antibody

Note: This product is for in vitro research use only