

## Cleaved-Notch 1 (V1754) Polyclonal Antibody

Catalog No: #40516

Package Size: #40516-1 50ul #40516-2 100ul

Orders: [order@signalwayantibody.com](mailto:order@signalwayantibody.com)Support: [tech@signalwayantibody.com](mailto:tech@signalwayantibody.com)

## Description

|                       |   |
|-----------------------|---|
| Product Name          | Cleaved-Notch 1 (V1754) Polyclonal Antibody   |
| Host Species          | Rabbit  |
| Clonality             | Polyclonal  |
| Purification          | The antibody was affinity-purified from rabbit antiserum by affinity-chromatography using epitope-specific immunogen.                                     |
| Applications          | WB IHC ELISA IF   |
| Species Reactivity    | Hu Ms Rt  |
| Specificity           | Cleaved-Notch 1 (V1754) Polyclonal Antibody detects endogenous levels of fragment of activated Notch 1 protein resulting from cleavage adjacent to V1754. |
| Immunogen Description | Synthesized peptide derived from the Internal region of human Notch 1.  |
| Target Name           | Cleaved-Notch 1   |
| Other Names           | NOTCH1; TAN1; Neurogenic locus notch homolog protein 1; Notch 1; hN1; Translocation-associated notch protein TAN-1  |
| Accession No.         | Swiss-Prot: P46531NCBI Gene ID: 4851  |
| Uniprot               | P46531  |
| GeneID                | 4851;   |
| SDS-PAGE MW           | 110kd   |
| Concentration         | 1mg/ml  |
| Formulation           | Liquid in PBS containing 50% glycerol, 0.5% BSA and 0.02% sodium azide.   |
| Storage               | Store at -20°C/1 year   |

## Application Details

Western Blot: 1/500 - 1/2000.

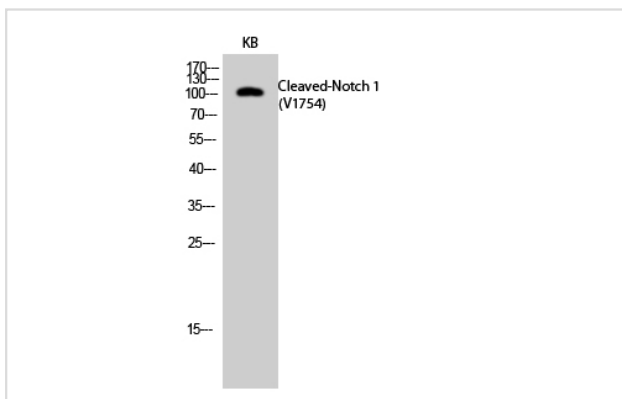
Immunohistochemistry: 1/100 - 1/300.

ELISA: 1/20000.

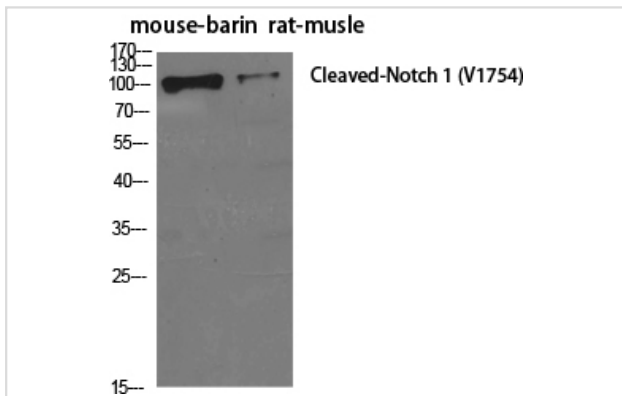
IF 1:50-300

Not yet tested in other applications.

## Images



Western Blot analysis of KB cells using Cleaved-Notch 1 (V1754) Polyclonal Antibody



Western Blot analysis of MOUSE-BRAIN RAT-MUSCLE cells using Cleaved-Notch 1 (V1754) Polyclonal Antibody

---

Note: This product is for in vitro research use only