

Cleaved-PARP-1 (G215) Polyclonal Antibody

Catalog No: #40519

Package Size: #40519-1 50ul #40519-2 100ul

Orders: order@signalwayantibody.comSupport: tech@signalwayantibody.com

Description

Product Name	Cleaved-PARP-1 (G215) Polyclonal Antibody
Host Species	Rabbit
Clonality	Polyclonal
Purification	The antibody was affinity-purified from rabbit antiserum by affinity-chromatography using epitope-specific immunogen.
Applications	WB ELISA
Species Reactivity	Hu
Specificity	Cleaved-PARP-1 (G215) Polyclonal Antibody detects endogenous levels of fragment of activated PARP-1 protein resulting from cleavage adjacent to G215.
Immunogen Type	peptide
Immunogen Description	Synthesized peptide derived from the Internal region of human PARP-1.
Target Name	Cleaved-PARP-1
Other Names	PARP1; ADPRT; PPOL; Poly [ADP-ribose] polymerase 1; PARP-1; ADP-ribosyltransferase diphtheria toxin-like 1; ARTD1; NAD(+) ADP-ribosyltransferase 1; ADPRT 1; Poly[ADP-ribose] synthase 1
Accession No.	Swiss-Prot: P09874NCBI Gene ID: 142
Uniprot	P09874
GeneID	142;
SDS-PAGE MW	89kd
Concentration	1mg/ml
Formulation	Liquid in PBS containing 50% glycerol, 0.5% BSA and 0.02% sodium azide.
Storage	Store at -20°C/1 year

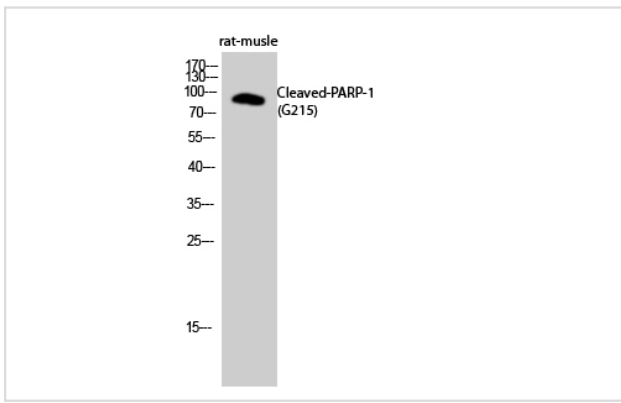
Application Details

Western Blot: 1/500 - 1/2000.

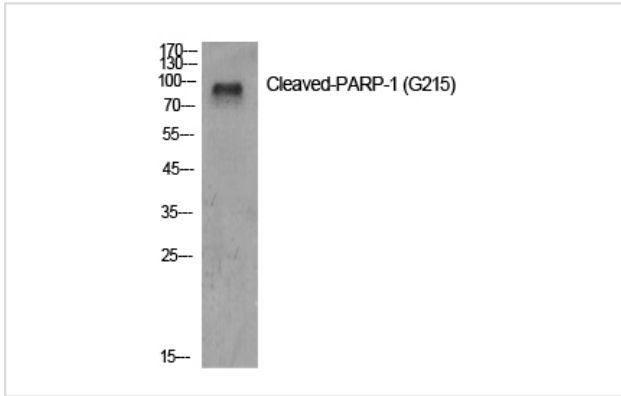
ELISA: 1/5000.

Not yet tested in other applications.

Images



Western Blot analysis of rat-muscle cells using Cleaved-PARP-1 (G215) Polyclonal Antibody



Western Blot analysis of various cells using Cleaved-PARP-1 (G215) Polyclonal Antibody

Note: This product is for in vitro research use only