

Cleaved-Plasma Kallikrein HC (R390) Polyclonal Antibody

Catalog No: #40521

Orders: order@signalwayantibody.comSupport: tech@signalwayantibody.com

Package Size: #40521-1 50ul #40521-2 100ul

Description

Product Name	Cleaved-Plasma Kallikrein HC (R390) Polyclonal Antibody
Host Species	Rabbit
Clonality	Polyclonal
Purification	The antibody was affinity-purified from rabbit antiserum by affinity-chromatography using epitope-specific immunogen.
Applications	WB IHC ELISA
Species Reactivity	Hu
Specificity	Cleaved-Plasma Kallikrein HC (R390) Polyclonal Antibody detects endogenous levels of fragment of activated Plasma Kallikrein HC protein resulting from cleavage adjacent to R390.
Immunogen Type	peptide
Immunogen Description	Synthesized peptide derived from the Internal region of human Plasma Kallikrein HC.
Target Name	Cleaved-Plasma Kallikrein HC
Other Names	KLKB1; KLK3; Plasma kallikrein; Fletcher factor; Kininogenin; Plasma prekallikrein
Accession No.	Swiss-Prot: P03952NCBI Gene ID: 3818
Uniprot	P03952
GeneID	3818;
SDS-PAGE MW	45kd
Concentration	1mg/ml
Formulation	Liquid in PBS containing 50% glycerol, 0.5% BSA and 0.02% sodium azide.
Storage	Store at -20°C/1 year

Application Details

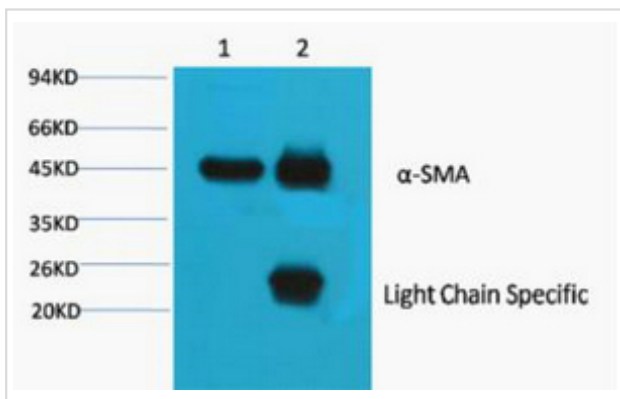
Western Blot: 1/500 - 1/2000.

Immunohistochemistry: 1/100 - 1/300.

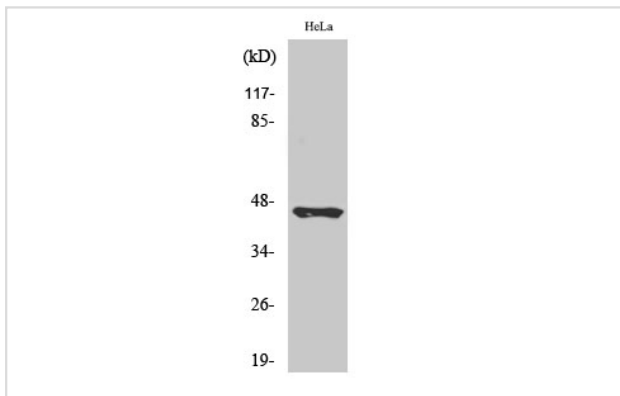
ELISA: 1/10000.

Not yet tested in other applications.

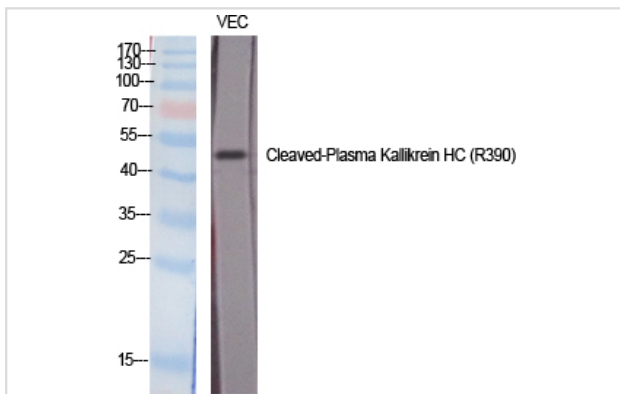
Images



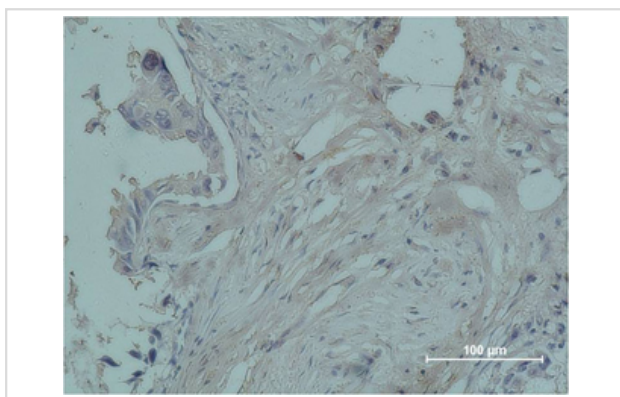
1) Input: Mouse Brain Tissue Lysate
 2) IP product: IP dilute 1: 200



Western Blot analysis of HeLa cells using Cleaved-Plasma Kallikrein HC (R390) Polyclonal Antibody



Western Blot analysis of VEC cells using Cleaved-Plasma Kallikrein HC (R390) Polyclonal Antibody



Immunohistochemical analysis of paraffin-embedded human breast carcinoma using PR Monoclonal Antibody.

Note: This product is for in vitro research use only