

# 11 $\beta$ -HSD1 Polyclonal Antibody

Catalog No: #40522

Package Size: #40522-1 50ul #40522-2 100ul

Orders: [order@signalwayantibody.com](mailto:order@signalwayantibody.com)Support: [tech@signalwayantibody.com](mailto:tech@signalwayantibody.com)

## Description

Product Name	11 $\beta$ -HSD1 Polyclonal Antibody
Host Species	Rabbit
Clonality	Polyclonal
Purification	The antibody was affinity-purified from rabbit antiserum by affinity-chromatography using epitope-specific immunogen.
Applications	WB IHC ELISA
Species Reactivity	Hu Ms Rt
Specificity	11 $\beta$ -HSD1 Polyclonal Antibody detects endogenous levels of 11 $\beta$ -HSD1 protein.
Immunogen Type	peptide
Immunogen Description	Synthesized peptide derived from the N-terminal region of human 11 $\beta$ -HSD1.
Target Name	11 $\beta$ -HSD1
Other Names	HSD11B1; HSD11; HSD11L; Corticosteroid 11-beta-dehydrogenase isozyme 1; 11-beta-hydroxysteroid dehydrogenase 1; 11-DH; 11-beta-HSD1
Accession No.	Swiss-Prot: P28845NCBI Gene ID: 3290
Uniprot	P28845
GeneID	3290;
SDS-PAGE MW	35kd
Concentration	1mg/ml
Formulation	Liquid in PBS containing 50% glycerol, 0.5% BSA and 0.02% sodium azide.
Storage	Store at -20°C/1 year

## Application Details

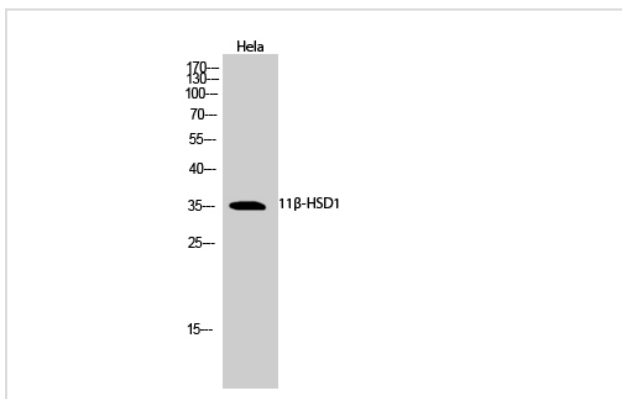
Western Blot: 1/500 - 1/2000.

Immunohistochemistry: 1/100 - 1/300.

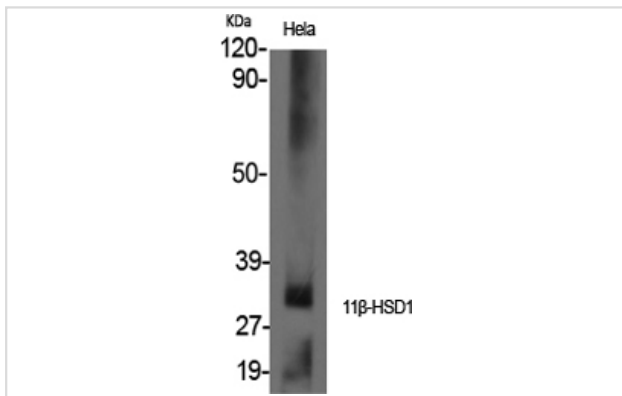
ELISA: 1/40000.

Not yet tested in other applications.

## Images



Western Blot analysis of HeLa cells using 11β-HSD1 Polyclonal Antibody



Western Blot analysis of HELA cells using 11β-HSD1 Polyclonal Antibody

---

Note: This product is for in vitro research use only