

14-3-3  $\zeta$  Polyclonal Antibody

Catalog No: #40525

Package Size: #40525-1 50ul #40525-2 100ul

Orders: [order@signalwayantibody.com](mailto:order@signalwayantibody.com)Support: [tech@signalwayantibody.com](mailto:tech@signalwayantibody.com)

## Description

Product Name	14-3-3 $\zeta$ Polyclonal Antibody
Host Species	Rabbit
Clonality	Polyclonal
Purification	The antibody was affinity-purified from rabbit antiserum by affinity-chromatography using epitope-specific immunogen.
Applications	WB IHC IP IF ELISA
Species Reactivity	Hu Ms Rt
Specificity	14-3-3 $\zeta$ Polyclonal Antibody detects endogenous levels of 14-3-3 $\zeta$ protein.
Immunogen Type	peptide
Immunogen Description	Synthesized peptide derived from human 14-3-3 $\zeta$ around the non-phosphorylation site of S58.
Target Name	14-3-3 $\zeta$
Other Names	YWHAZ; 14-3-3 protein zeta/delta; Protein kinase C inhibitor protein 1; KCIP-1
Accession No.	Swiss-Prot: P63104NCBI Gene ID: 7534
Uniprot	P63104
GeneID	7534;
SDS-PAGE MW	28kd
Concentration	1mg/ml
Formulation	Liquid in PBS containing 50% glycerol, 0.5% BSA and 0.02% sodium azide.
Storage	Store at -20°C/1 year

## Application Details

Western Blot: 1/500 - 1/2000.

Immunohistochemistry: 1/100 - 1/300. Immunoprec

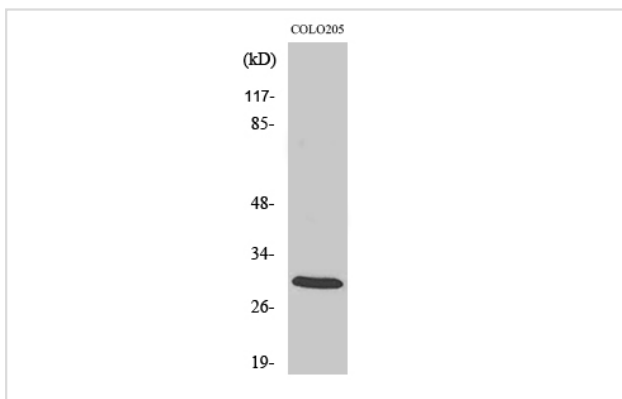
Immunoprecipitation: 2-5 ug/mg lysate.

Immunofluorescence: 1/200 - 1/1000.

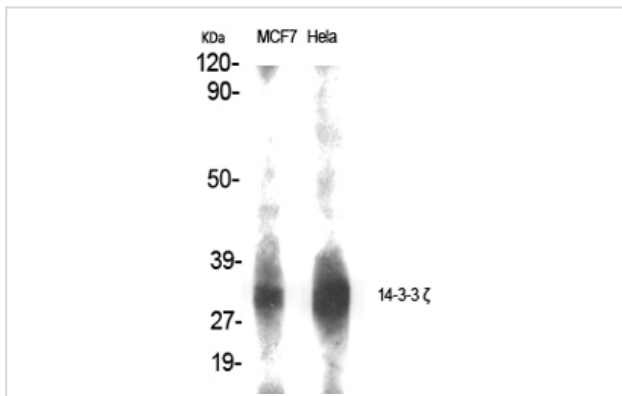
ELISA: 1/40000.

Not yet tested in other applications.

## Images



Western Blot analysis of COLO205 cells using 14-3-3  $\zeta$  Polyclonal Antibody



Western Blot analysis of MCF7 HELA cells using 14-3-3  $\zeta$  Polyclonal Antibody

---

Note: This product is for in vitro research use only