

14-3-3  $\theta/\tau$  Polyclonal Antibody

Catalog No: #40526

Package Size: #40526-1 50ul #40526-2 100ul

Orders: [order@signalwayantibody.com](mailto:order@signalwayantibody.com)Support: [tech@signalwayantibody.com](mailto:tech@signalwayantibody.com)

## Description

Product Name	14-3-3 $\theta/\tau$ Polyclonal Antibody
Host Species	Rabbit
Clonality	Polyclonal
Purification	The antibody was affinity-purified from rabbit antiserum by affinity-chromatography using epitope-specific immunogen.
Applications	WB IHC IF ELISA
Species Reactivity	Hu Ms Rt
Specificity	14-3-3 $\theta/\tau$ Polyclonal Antibody detects endogenous levels of 14-3-3 $\theta/\tau$ protein.
Immunogen Type	peptide
Immunogen Description	Synthesized peptide derived from human 14-3-3 $\theta/\tau$ around the non-phosphorylation site of S232.
Target Name	14-3-3 $\theta/\tau$
Other Names	YWHAQ; 14-3-3 protein theta; 14-3-3 protein T-cell; 14-3-3 protein tau; Protein HS1
Accession No.	Swiss-Prot: P27348NCBI Gene ID: 10971
Uniprot	P27348
GeneID	10971;
SDS-PAGE MW	28kd
Concentration	1mg/ml
Formulation	Liquid in PBS containing 50% glycerol, 0.5% BSA and 0.02% sodium azide.
Storage	Store at -20°C/1 year

## Application Details

Western Blot: 1/500 - 1/2000.

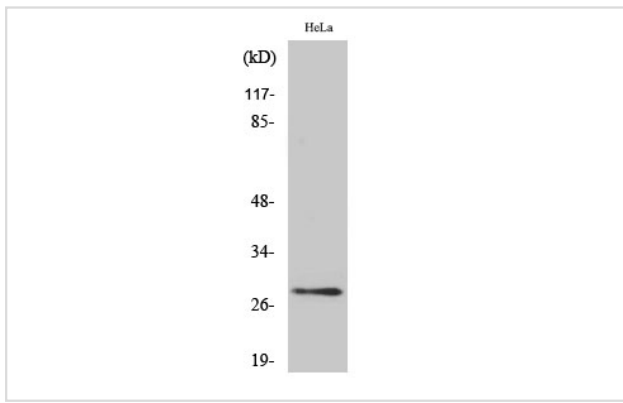
Immunohistochemistry: 1/100 - 1/300.

Immunofluorescence: 1/200 - 1/1000.

ELISA: 1/5000.

Not yet tested in other applications.

## Images



Western Blot analysis of HeLa cells using 14-3-3  $\theta/\tau$  Polyclonal Antibody

---

Note: This product is for in vitro research use only