

9G8 Polyclonal Antibody

Catalog No: #40529

Package Size: #40529-1 50ul #40529-2 100ul

Orders: order@signalwayantibody.comSupport: tech@signalwayantibody.com

Description

Product Name	9G8 Polyclonal Antibody
Host Species	Rabbit
Clonality	Polyclonal
Purification	The antibody was affinity-purified from rabbit antiserum by affinity-chromatography using epitope-specific immunogen.
Applications	WB IHC ELISA
Species Reactivity	Hu Ms
Specificity	9G8 Polyclonal Antibody detects endogenous levels of 9G8 protein.
Immunogen Type	peptide
Immunogen Description	Synthesized peptide derived from the Internal region of human 9G8.
Target Name	9G8
Other Names	SRSF7; SFRS7; Serine/arginine-rich splicing factor 7; Splicing factor 9G8; Splicing factor; arginine/serine-rich 7
Accession No.	Swiss-Prot: Q16629NCBI Gene ID: 6432
Uniprot	Q16629
GeneID	6432;
SDS-PAGE MW	35kd
Concentration	1mg/ml
Formulation	Liquid in PBS containing 50% glycerol, 0.5% BSA and 0.02% sodium azide.
Storage	Store at -20°C/1 year

Application Details

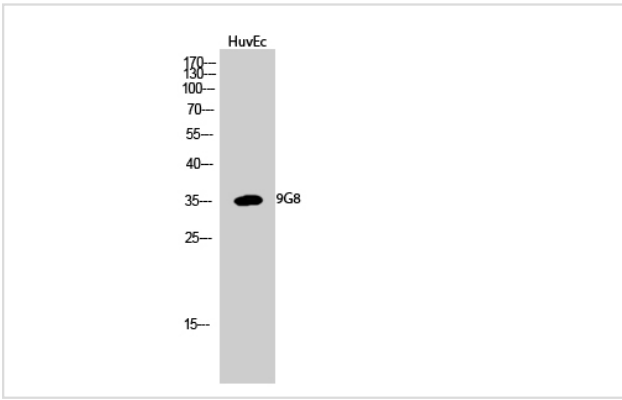
Western Blot: 1/500 - 1/2000.

Immunohistochemistry: 1/100 - 1/300.

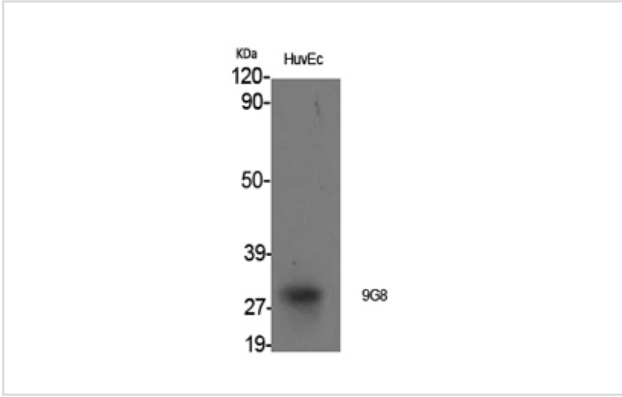
ELISA: 1/40000.

Not yet tested in other applications.

Images



Western Blot analysis of HuvEc cells using 9G8 Polyclonal Antibody



Western Blot analysis of HuvEc cells using 9G8 Polyclonal Antibody

Note: This product is for in vitro research use only