

ABCG2 Polyclonal Antibody

Catalog No: #40537

Package Size: #40537-1 50ul #40537-2 100ul

Orders: order@signalwayantibody.comSupport: tech@signalwayantibody.com

Description

Product Name	ABCG2 Polyclonal Antibody
Host Species	Rabbit
Clonality	Polyclonal
Purification	The antibody was affinity-purified from rabbit antiserum by affinity-chromatography using epitope-specific immunogen.
Applications	WB IHC ELISA
Species Reactivity	Hu
Specificity	ABCG2 Polyclonal Antibody detects endogenous levels of ABCG2 protein.
Immunogen Type	peptide
Immunogen Description	Synthesized peptide derived from the Internal region of human ABCG2.
Target Name	ABCG2
Other Names	ABCG2; ABCP; BCRP; BCRP1; MXR; ATP-binding cassette sub-family G member 2; Breast cancer resistance protein; CDw338; Mitoxantrone resistance-associated protein; Placenta-specific ATP-binding cassette transporter; CD antigen CD338
Accession No.	Swiss-Prot: Q9UNQ0NCBI Gene ID: 9429
Uniprot	Q9UNQ0
GeneID	9429;
SDS-PAGE MW	72kd
Concentration	1mg/ml
Formulation	Liquid in PBS containing 50% glycerol, 0.5% BSA and 0.02% sodium azide.
Storage	Store at -20°C/1 year

Application Details

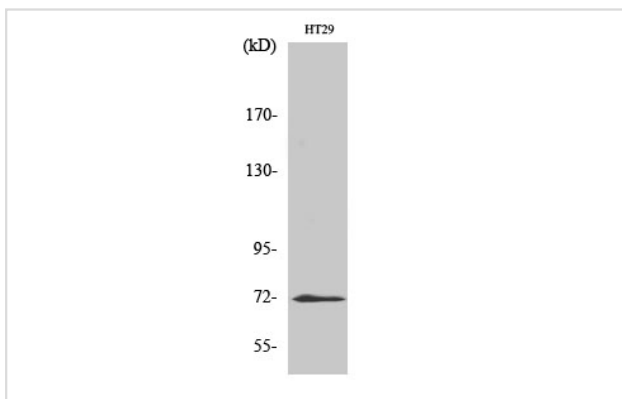
Western Blot: 1/500 - 1/2000.

Immunohistochemistry: 1/100 - 1/300.

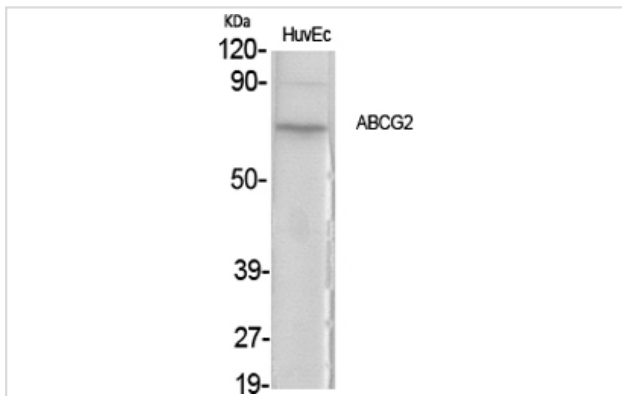
ELISA: 1/10000.

Not yet tested in other applications.

Images



Western Blot analysis of HT29 cells using ABCG2 Polyclonal Antibody



Western Blot analysis of HuvEc cells using ABCG2 Polyclonal Antibody

Note: This product is for in vitro research use only